

today's hot line

Vol. 85 No. 3 18 Pages 2 Sections

bulletin

Anti War Strike In Schools Nov. 3

Classes at Schoolcraft and Oakland Community Colleges and Stevenson High School in Livonia and Clarenceville High School may be empty or show a high absentee rate on the Nov. 3 national student strike for peace. Lee Artz, representative of the Student Mobilization Committee, said he has contacts at each of the schools who are working for the strike and organizing anti-war discussions to be held in the schools on that date. Regional anti-war demonstrations are scheduled for Nov. 6.

Early Planning

It's not too early to start mapping specific plans for the 1972 Fall Festival, and that's exactly what directors will have in mind when they meet Wednesday. In a view through Bifocals, added presence of garden club representatives may provide a bit of extra sparkle.

Page 3A

Meters An Issue

A look at Plymouth's problems in attracting commerce and industry has been gained from an outside authority by The Stroller, who found that metered parking is one of the drawbacks of the city.

Page 4A

Old Church, New Plan

An addition to the church building of a venerable Observerland congregation turned out to be structured along rather new lines. Read about it on our Church Page.

Page 7A

Amusements	5A
Churches in Action	6-7A
Classified Want Ads	Sec. 8
Deaths and Funerals	6A
Sports-Prep and Pro	8A, 10B
Spotlight on Women	5A

Read The OBSERVER and Know The Score



For exciting accounts of on the field action and behind the scenes reporting, read the OBSERVER SPORTS PAGES. Discover the newest high school football stars and the latest college contenders as they vie for state titles.



PLYMOUTH'S 1971 COMMUNITY FUND campaign is officially under way, and by its conclusion Nov. 18 hundreds of volunteer workers hope to have raised their record goal of \$175,600. House-to-house canvassing will begin Monday. The Community Fund torch, which will burn in Kellogg Park throughout the campaign, was ignited Tuesday by the reigning Miss Plymouth, Sherrill Bollin, as Ron Coosaia, general chairman of the drive, looked on. (Observer photo by Bob Woodring).

PCF Is Aid To 'Army'

(Editor's Note: The following is the first of a series of articles on the agencies which gain at least part of their financial support from the Plymouth Community Fund, whose 1971 campaign is now under way. This article concerns the Salvation Army, which the PCF has budgeted for \$16,000.)

Two years ago the Salvation Army added a full time staff position that has resulted in greatly expanded programs and services to the Plymouth area.

A rather rotund and un-decorative, yet spirited individual, the new worker logged 13,000 miles in service to the community in 1970, and doubtless will top the record this year.

In fact, Corps Capt. Warren Yoder says that the Salvation Army's mini-bus and its broad range of uses has gained national recognition for the local organization among centers across the United States.

"The Salvation Army is a

church, and most churches stay in one place. But people move, and sometimes they don't have transportation to get to church. So," Yoder says, "we come to them."

On Sunday, the bus puts over to the Hamilton Park area to conduct Sunday school for some 30 to 50 neighborhood kids.

On other days, it transports teenagers and elementary school children on trips and to group meetings.

It conducts senior citizens to health centers for shots, x-rays and physical examinations, or to shopping centers for Christmas gift buying. The seniors have also gone to events such as the ice follies, one day trips to Jackson and Windsor, and "color tours" in the fall when the leaves turn.

THE BUS is on emergency call to serve coffee and food at the scene of a fire, or under more relaxed circumstances at civic events.

It's also making it easier for more area residents to take

advantage of several new programs planned by the agency.

One is a cooperative play school for mothers of children aged three months to five years. From 9 a.m. until 12 noon on Tuesdays and Thursdays, mothers can leave their youngsters at the Army center and take off for shopping or other activities, Yoder says. Groups of the mothers take turns conducting games and crafts for the children for the morning.

"We're organizing a bowling program on Thursday mornings so that the women who want to can enjoy some recreation while the children are at play school. Family Service Agency is planning a class on child management on Tuesdays. Of course," Yoder says, "these programs aren't restricted to those using the play school."

Actually, none of the Salvation Army's activities is restricted - all are welcome, regardless of age or income level. And all programs and services are free. They are underwritten by a yearly allocation from the Plymouth Community Fund.

THE COMMUNITY Fund drive, set for Sept. 28 - Nov. 18 this year, supports a broad range of Salvation Army activities which, as Yoder points out, are difficult to evaluate in dollars and cents.

"For instance, 57 area families received Christmas food orders, and nearly 300 children received toys, mittens, socks, fruit and candy. During this year, we will be visiting many of these children personally on their birthdays. It won't cost us much, but it's hard to say of what value it will be to the child on his special day," Yoder says.

People turn to the Salvation Army for temporary help when they experience problems at home or on the job, from drinking or poor health, or "just plain circumstances."

The Army assisted 1,232 individuals in emergencies last year, not counting the 2,746 visited at Christmas or the approximately 8,000 adults and children who attended worship services.

But Yoder and his staff don't make much of a point of this; they explain, "the Salvation Army exists to help others and to build them up, not ourselves."

School Costs Up 11.3% In Budget Of \$9.7 Million

By KATHY MORAN

The cost of education in Plymouth climbed 11.3 per cent for the current school year, according to the projected \$9.77 million budget approved by the Plymouth Board of Education on Tuesday.

Only five citizens came specifically for the public hearing on the 1971-72 budget before it was adopted 5-0 by the board. Board Chairman Esther Hulsing and Dr. John Ohno were absent, but they had participated in earlier work sessions on the document.

The increase over the \$8.8 million 1970-71 budget was due almost entirely to an increase in student enrollment and salary increases for school district employees, Asst. Supt. Melvin Blunk said.

STUDENT ENROLLMENT is expected to increase by 5.8 per cent this year over the enrollment at the end of the previous school year. A total of 9,545 students was enrolled at the end of last year and 555 more, or 10,100, are expected for this year.

Sixty-four additional personnel were added to the staff including 26 teachers, a social worker, six bus drivers, a crossing guard, an administrator, 23 educational aides, a part time speech correctionist, three custodial workers, two secretaries and a part time bookkeeper.

THE 1971 school tax levy is set at 32.55 mills, or \$32.55 per \$1,000 of state equalized valuation (SEV). The levy is 75 cents per \$1,000 SEV less than the 1970 rate of \$33.30.

Though the overall tax rate decreased, the board increased the levy for operating expenses from the 1970 rate of \$25.70 to \$26.30 per \$1,000 SEV.

However, it reduced the levy for debt retirement from \$7.60 to \$6.25.

Blunk emphasized that the board has the authority to levy 75 cents more per \$1,000 SEV than it actually did.

"We tried to realize efficiencies and I think we did," board member John Hanskat added.

THE MAIN question raised from the audience concerned the reason for the high operating millage when the school district receives more revenue because of property reassessments.

Hanskat explained that because of the state formula for distributing state aid, when SEV in a district goes up, the state aid automatically goes down. The formula is designed to give more state aid to the poorer school districts with low tax bases, and less to the districts that can afford to carry more of the education costs.

Whereas 40 per cent of Plymouth's budget in 1966 was of state and federal aid, the percentage has decreased to 35 per cent in 1967, 33 per cent in 1968, 30 per cent in 1969, 25 per cent in 1970 and 19 per cent in 1971, Hanskat said.

Actually, by the time an increased SEV is run through the state aid formula and penalized for delinquent taxes, each million dollar increase in SEV only yields about \$10,000 for the school district's general fund, Hanskat said.

Thus, the \$46 million increase in SEV that the district experienced since last year yielded only \$46,000 additional revenue for the district, he said.

SCHOOL SUPT. James Rossman said the district received \$210 per student from the state in 1969, \$192 in 1970 and \$172 in 1971.

The cost of educating each Plymouth student rose at the same time from \$915 per student in 1970 to \$970 for the current year.

The total state and federal aid that Plymouth schools expect amounts to \$1.84 million when \$227,000 is subtracted from Plymouth's aid for the contingency fund established by Gov. William Milliken to cover state deficits.

Local revenue amounts to the balance of the budget, or \$7.92 million. Of this figure, \$7.65 million is from property taxes and the remainder is from delinquent taxes and the interest on them, summer school receipts, tuition from patrons, interest on investments, and trailer court fees.

THE PROPOSED budget allocates \$3.1 million for elementary instruction, \$3.7 million for secondary instruction, \$286,000 for special education, \$7,600 for summer school, \$362,000 for administration, \$33,000 for health and nursing, \$26,900 for transportation, \$1.1 million for operation, \$316,000 for maintenance, \$363,700 for fixed charges, \$152,000 for capital outlay, and \$20,000 for community services.

The planned expenditures represent increases over last year in all areas except summer school, which decreased by \$1,600, and capital outlay, which decreased by \$23,000.

Blunk said that approximately 85 per cent of the budget is for salaries for all school district employees.

Since the five mills operating millage voted in 1967 expires at the end of this fiscal year, Plymouth residents will be faced with a renewal request at the end of the school year.

Editorial

No Reason For Hysteria

Many good people are becoming unnecessarily stirred up at the thought of children being bussed between school districts to achieve racial integration.

There is no reason for alarm, even if you oppose such bussing. Federal Judge Stephen Roth so far has ruled only as a point of law that Detroit's schools are segregated. He has not ruled whether the suburbs will even be a party to the case, let alone that they will be affected. Moreover, it's certain that whatever decision he makes will be appealed to higher courts.

We offer these suggestions: DON'T BE upset. The court processes alone will take many months, if not years, to go through.

DON'T BOYCOTT your schools by keeping your children home. It won't cut off any state aid and only disrupt your children's education.

DON'T LISTEN to extremists. All sorts of frightened, uninformed people are coming out of the woodwork, hoping to reap a lot of political glory by organizing anti-bussing meetings. They are trying to exploit your emotions. Ignore them.

DON'T PAY attention to anonymous pamphlets or circulars.

LISTEN to your school board attorney. He's the man who will learn first exactly what the court situation is and he's the man best qualified to explain it.

WATCH YOUR hometown newspaper. We will report exactly what happens - fully, unemotionally and as carefully as humanly possible.

Working out the bussing issue - on which many people have strong and differing feelings - through the proper legal channels will take time. Hysteria, rumors and mass meetings can accomplish little now, and they run the risk of seriously hurting our school system in the process.

Let's handle this difficult situation the way we should - as adults.

-Observer Newspapers

Continued on Page 4A



POSTING AND FILING OF CITY COMMISSION MINUTES

CITY OF PLYMOUTH, MICHIGAN

Notice is hereby given that on the 1st day of October, 1971, true copies of the minutes of the Regular meeting of the City Commission held on Monday, August 16, 1971, at 7:30 p.m., were posted on the official bulletin boards of the City of Plymouth, located at the southeasterly corner of the intersection of S. Main Street and Penniman Avenue; the southeasterly corner of the intersection of Starkweather Avenue and W. Liberty Street; and the South entrance of the Central Parking Lot facing S. Harvey Street; and also on the bulletin board in the City Hall at 201 S. Main Street. These minutes are posted in accordance with Section 5.11 of the City Charter for the benefit and information of all interested citizens of the City of Plymouth.

EUGENE S. SLIDER,
City Clerk

Publish October 2, 1971



POSTING AND FILING OF CITY COMMISSION MINUTES

CITY OF PLYMOUTH, MICHIGAN

Notice is hereby given that the 1st day of October, 1971, true copies of the minutes of the Special meeting of the City Commission held on Monday, August 9, 1971, at 7:45 p.m., were posted on the official bulletin boards of the City of Plymouth, located at the southeasterly corner of the intersection of S. Main Street and Penniman Avenue; the southeasterly corner of the intersection of Starkweather Avenue and W. Liberty Street; and the South entrance of the Central Parking Lot facing S. Harvey Street; and also on the bulletin board in the City Hall at 201 S. Main Street. These minutes are posted in accordance with Section 5.11 of the City Charter for the benefit and information of all interested citizens of the City of Plymouth.

EUGENE S. SLIDER
City Clerk

Publish October 2, 1971



NOTICE TO BIDDERS

CITY OF PLYMOUTH, MICHIGAN

Notice is hereby given that the City of Plymouth, Michigan, will receive bids up to 2:00 P.M., E.S.T., Tuesday, October 12, 1971, for the following:

TO SUPPLY AND PLANT SHADE TREES AND SHRUBS

The City Commission reserves the right to accept or reject any or all bids, in whole or in part, and to waive any irregularities. Address bids to Eugene S. Slider, City Clerk, 201 S. Main Street, Plymouth, Michigan 48170, in a sealed envelope bearing the inscription "Bid to Supply and Plant Shade Trees and Shrubs." Specifications are available at the Office of the City Clerk during regular office hours.

EUGENE S. SLIDER
City Clerk

Publish October 2, 1971

ORDINANCE NO. 27.07 '71

AN ORDINANCE TO AMEND THE ZONING ORDINANCE OF THE TOWNSHIP OF PLYMOUTH BY AMENDING THE ZONING MAP

THE TOWNSHIP OF PLYMOUTH ORDAINS

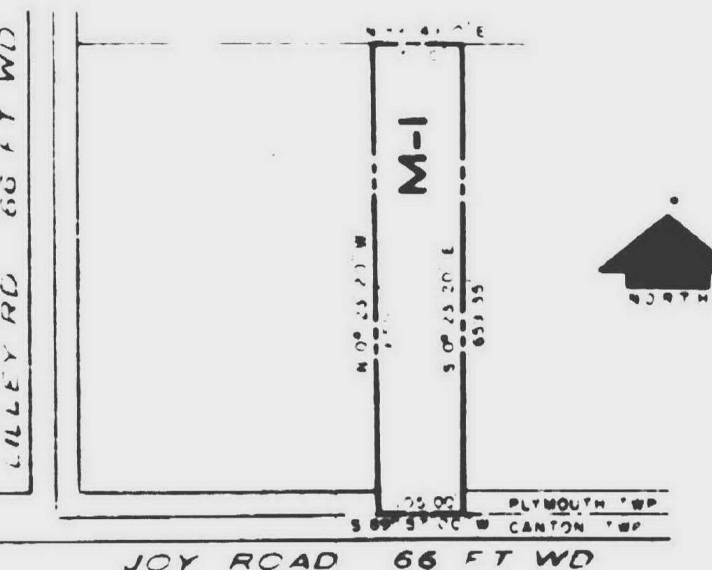
PART I That the Township Zoning Ordinance is hereby amended by amending the Zoning Map, by changing those areas indicated on the Amended Zoning Map, No. 36, attached hereto and made a part of this Ordinance.

PART II CONFLICTING PROVISIONS REPEALED Any Ordinance or parts of Ordinance in conflict, herewith, are hereby repealed.

PART III EFFECTIVE DATE The provisions of the Ordinance are hereby declared to be immediately necessary for the preservation of the public peace, health, and safety, and are hereby ordered to take immediate effect and be in force from and after the earliest date allowed by law.

PART IV ADOPTION This Ordinance was adopted by the Township Board of the Township of Plymouth by authority of Act 184, of the Public Acts of Michigan, 1949, at a meeting duly called and held on this 28 day of September, A.D. 1971, and ordered to be given publication in the manner prescribed by law.

MAURICE M. BREEN
Supervisor
HELEN RICHARDSON
Township Clerk



TO REZONE FROM R-3-A, GARDEN APARTMENT RESIDENTIAL DISTRICT, TO A-1, LIGHT MANUFACTURING DISTRICT, Commencing at the South 1/4 corner of Section 35, T.1 S., R.8 E., Plymouth Township, Wayne County, Michigan, and proceeding thence along the South line of said Section 35, N. 89 degrees 57' 00" E., 445.00 feet to a point of beginning; thence N. 0 degrees 25' 30" W., 600.11 feet; thence N. 89 degrees 40' 10" E., 105.00 feet; thence S. 0 degrees 25' 30" E., 600.35 feet; thence along the South line of said Section 35, S. 89 degrees 57' 00" W., 105.00 feet to the point of beginning, containing 1.889 acres. Subject to the rights of the public in Joy Road. Property located on North side of Joy Rd., approximately 445' east of the corner of Lilley Road.

ORDINANCE NO. 27.07 '71

AMENDED ZONING MAP NO. 36 OF THE TOWNSHIP OF PLYMOUTH WAYNE COUNTY, MICHIGAN

ADOPTED BY THE PLYMOUTH TOWNSHIP BOARD

September 28, 1971

MAURICE M. BREEN
Supervisor
HELEN RICHARDSON
Clerk

Publish: October 2, 1971

CHS Bids Delayed

A motion to take bids on the vocational wing of Canton High School failed in a 3 to 2 vote at the Plymouth Board of Education meeting Tuesday.

Though John Hanskat, John Graves and Fred Penar voted to move ahead with the bids, the motion failed for lack of a fourth vote. Four votes are needed to pass a motion.

George Lawton and Wilson Sick opposed the motion, and Chairman Esther Hulsing and Dr. John Ohno were absent.

Final plans for the addition

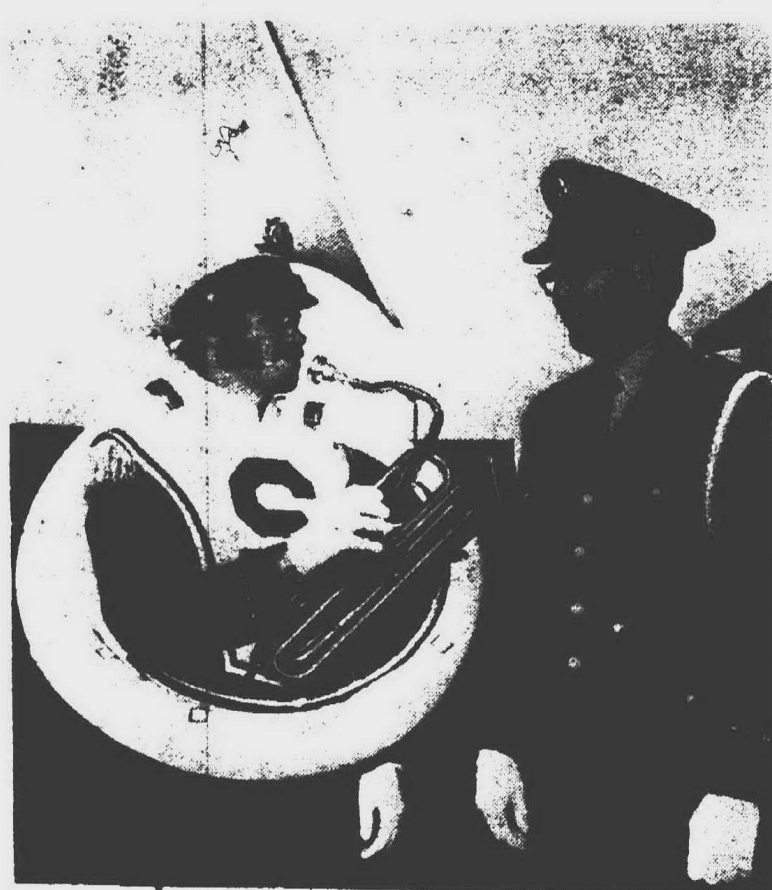
were explained by representatives of the architectural firm Wakely Kuser Associates during the meeting.

Though Hanskat was eager to proceed with taking bids for the addition, Lawton urged that bids be delayed until the financial condition is reviewed.

The school district is not obligated to let bids after they are submitted.

Camp Finishes Boot Training

Marine Pvt. Daniel T. Camp, son of Mr. and Mrs. Robert J. Camp of 382 Ann, Plymouth, graduated from recruit training at the Marine Corps Recruit Depot, Parris Island, S.C.



STUART B. DELANEY, son of Mr. and Mrs. Robert Delaney, of 48130 Gyde Rd., and a 1971 graduate of Plymouth High School, is among the new members of the 215-piece Michigan State University marching band. Delaney is an engineering major and is shown with David Catron, assistant director of bands at MSU.

WMU Awards Brian Shaw Assistantship

PLYMOUTH Brian R. Shaw, son of Mr. and Mrs. George Shaw, of 15143 Farmbrook Drive, Plymouth, has received an undergraduate assistantship from Western Michigan University's Honors College. He will work with Dr. W. David Kuenzi, associate professor of geology at Western. His project will be "Depositional Environments of the Tertiary Basin-Fill Deposits, Jefferson Basin, Montana."

Shaw is a junior at WMU, majoring in geology and minoring in science.

Good Start

Michigan State place-kicking specialist Borys Shlapak of Park Ridge, Ill., connected on his first field goal attempt of 1971 - a 48-yard boot against Illinois as State won, 10-0.

J. RUSLING CUTLER, Attorney
193 N. Main Street
Plymouth

STATE OF MICHIGAN
PROBATE COURT FOR THE COUNTY OF WAYNE
612.058

It is Ordered that on December 15, 1971 at 2:30 p.m., in the Probate Court room, 1221 Detroit, Michigan, a hearing be held at which all creditors of said deceased are required to prove their claims. Creditors must file sworn claims with the court and serve a copy on Ruby C. Carr, administratrix of said estate, 15631 Robinwood, Plymouth, Michigan 48170, prior to said hearing.

Publication and service shall be made as provided by statute and Court rule. Dated: September 21, 1971

IRA G. KAUFMAN,
Judge of Probate

J. Rusling Cutler, Attorney
193 N. Main Street
Plymouth, Michigan
A True Copy
HENDRIX R. KANOYTON
Deputy Probate Register
Newspaper: Plymouth Mail & Observer
10-2, 9, 16

EUGENE S. SLIDER
City Clerk

Publish: October 2, 1971



POSTING AND FILING OF CITY COMMISSION MINUTES

CITY OF PLYMOUTH, MICHIGAN

Notice is hereby given that on the 1st day of October, 1971, true copies of the minutes of the Regular meeting of the City Commission held on Tuesday, September 7, 1971, at 7:30 p.m., were posted on the official bulletin boards of the City of Plymouth, located at the southeasterly corner of the intersection of S. Main Street and Penniman Avenue; the southeasterly corner of the intersection of Starkweather Avenue and W. Liberty Street; and the South entrance of the Central Parking Lot facing S. Harvey Street; and also on the bulletin board in the City Hall at 201 S. Main Street. These minutes are posted in accordance with Section 5.11 of the City Charter for the benefit and information of all interested citizens of the City of Plymouth.

EUGENE S. SLIDER
City Clerk

Publish: October 2, 1971



POSTING AND FILING OF CITY COMMISSION MINUTES

CITY OF PLYMOUTH, MICHIGAN

Notice is hereby given that on the 1st day of October, 1971, true copies of the minutes of the Regular meeting of the City Commission held on Monday, August 2, 1971, at 7:30 p.m., were posted on the official bulletin boards of the City of Plymouth, located at the southeasterly corner of the intersection of S. Main Street and Penniman Avenue; the southeasterly corner of the intersection of Starkweather Avenue and W. Liberty Street; and the South entrance of the Central Parking Lot facing S. Harvey Street; and also on the bulletin board in the City Hall at 201 S. Main Street. These minutes are posted in accordance with Section 5.11 of the City Charter for the benefit and information of all interested citizens of the City of Plymouth.

EUGENE S. SLIDER
City Clerk

Publish: October 2, 1971



POSTING AND FILING OF CITY COMMISSION MINUTES

CITY OF PLYMOUTH, MICHIGAN

Notice is hereby given that on the 1st day of October, 1971, true copies of the minutes of a Special meeting of the City Commission held on Wednesday, August 25, 1971, at 7:15 a.m., were posted on the official bulletin boards of the City of Plymouth, located at the southeasterly corner of the intersection of S. Main Street and Penniman Avenue; the southeasterly corner of the intersection of Starkweather Avenue and W. Liberty Street; and the South entrance of the Central Parking Lot facing S. Harvey Street; and also on the bulletin board in the City Hall at 201 S. Main Street. These minutes are posted in accordance with Section 5.11 of the City Charter for the benefit and information of all interested citizens of the City of Plymouth.

EUGENE S. SLIDER
City Clerk

Publish: October 2, 1971



NO GIMMICKS "CARY DOES IT AGAIN" IMMEDIATE INSTALLATION AVAILABLE! NO GIMMICKS

ALL FIRST QUALITY
YOU MUST BRING THIS AD

CARY'S CARPET CO.

ONE OF LIVONIA'S LARGEST STOCKING DEALERS!
OPEN SUNDAY 1 - 6 P.M.
Hundreds of Deals... Special Sale This Week Only!

"601" NYLON	SHAGS	VELVETS
• LOOPED & SHEARED	• 100% NYLON	• ACRYLIC CANDY STRIPE
• TILLY WOVEN	• EASY CLEANING	• BLUE OR GOLD NYLON
• MANY COLORS	• MANY COLORS	• VERY LUXURIOUS
• BEAUTIFUL DESIGN	• LONG WEARING	
COMPARE TO 5.95 NOW \$3.95	COMPARE TO 5.49 NOW \$2.95	COMPARE TO 5.95 NOW \$3.95
ODD ROLLS	HERCULON	SHAGS
• POLYESTER SHAGS	• EASY CLEANING	• 100% NYLON
• DUPONT NYLON	• THICK PILE	• MANY COLORS
• POLYESTER PLUSH	• LONG WEARING	• LONG WEARING
• MANY MORE		• EASY CLEANING
VALUES TO 7.95 NOW \$1.95	COMPARE TO 6.95 NOW \$3.95	COMPARE TO 7.95 NOW \$4.75

FREE PARKING • AIR CONDITIONED STORE • EASY TERMS
CARY'S CARPET CO. 20319 MIDDLEBELT 477-1636
Just S. of 8 Mile 477-1290



PLYMOUTH COMMUNITY SCHOOL LUNCH MENUS

Week of Monday, October 4 Through Friday, October 8

ALLEN	BIRD
MONDAY, OCTOBER 4 Chicken Noodle Soup and Crackers, Peanut Butter, and Honey Sandwich, Fruit Cup, Cookie, Milk TUESDAY, OCTOBER 5 Hamburger on Bun, Relishes, Buttered Green Beans, Fruit Cup, Milk WEDNESDAY, OCTOBER 6 Toasted Cheese Sandwich, Buttered Corn, Fruit Cup, Chocolate Cake, Milk THURSDAY, OCTOBER 7 Hot Dog on a Bun, Relishes, Buttered Carrots, Fruit Cup, Peanut Butter Cake, Milk FRIDAY, OCTOBER 8 Spaghetti with Meat Sauce, Buttered Vegetable, Orange Honey Bread, Fruit Cup, Milk	MONDAY, OCTOBER 4 Chicken Rice Soup, Crackers, Peanut Butter and Honey Sandwich, Cheese Stick, Fruit Cup, Cookie, Milk TUESDAY, OCTOBER 5 Submarine Sandwich, Buttered Green Beans, Pickle Slice, Orange Juice, Brownie, Milk WEDNESDAY, OCTOBER 6 Hamburger Gravy, Mashed Potatoes, Bread and Butter, Pickle Slice, Cookie, Milk THURSDAY, OCTOBER 7 Hot Dogs, Relishes, Sweet Potatoes, Buttered, Pineapple Cup, Cookie, Milk FRIDAY, OCTOBER 8 Tuna Sandwich, Buttered Corn, Pickle and Cheese Slice, Jello with Fruit, Cake with Frosting, Milk
FIEGEL	FARRAND
MONDAY, OCTOBER 4 Chicken Noodle Soup and Crackers, Carrot Sticks, Peanut Butter and Honey Sandwich, Fruit, Brownie, Milk TUESDAY, OCTOBER 5 Hot Dog on a Buttered Bun, Catsup or Mustard, Buttered Corn, Apple Strudel, Milk WEDNESDAY, OCTOBER 6 Hamburger Gravy over Mashed Potatoes, Carrot and Celery Stick, Warm Buttered Rolls, Pudding, Milk THURSDAY, OCTOBER 7 Grilled Cheese Sandwich, Pickle Slices, Choice of Buttered Mixed Vegetable or Cabbage Salad, Fruit Bar, Milk FRIDAY, OCTOBER 8 Meat and Noodle Casserole, Buttered Green Beans, Fruit Cup, Buttered Warm Muffin with Topping, Milk	MONDAY, OCTOBER 4 Grilled Cheese Sandwich, Cream of Tomato Soup, Carrot Sticks, Fruit Cup, Peanut Butter Cookie, Milk TUESDAY, OCTOBER 5 Sloppy Joes on Bun, Buttered Corn, Pear Cup, Brownie, Milk WEDNESDAY, OCTOBER 6 Spaghetti with Meat Sauce, Harvard Beets or Spinach, Peach Cup, Cinnamon Roll, Milk THURSDAY, OCTOBER 7 Hot Dog on Buttered Bun, Catsup, Mustard or Relish, Buttered Green Beans or Sauerkraut, Apple Crisp, Milk FRIDAY, OCTOBER 8 Oven Fried Fish Sticks, Tartar Sauce, Buttered Peas, Buttered French Bread, Orange Juice, Chocolate Chip Cookies, Milk
GALLIMORE	ISBISTER
MONDAY, OCTOBER 4 Vegetable Beef Soup, Crackers, Peanut Butter Sandwich, Carrot and Celery Strips, Fruit Cup, Butterscotch Bar, Milk TUESDAY, OCTOBER 5 Sloppy Joes on Buttered Bun, Buttered Wax Beans, Apple Crisp, Milk WEDNESDAY, OCTOBER 6 Macaroni and Cheese, Buttered Mixed Vegetables, Buttered Hot Rolls, Fruit, Cake, Milk THURSDAY, OCTOBER 7 Hot Dog on Buttered Bun, Catsup or Mustard, Buttered Corn, Fruit, Tollhouse Bar, Milk FRIDAY, OCTOBER 8 Fish Patty on Buttered Bun, Tartar Sauce, Buttered Green Beans, Fruit, Cake, Milk	MONDAY, OCTOBER 4 Chicken Noodle Soup, Crackers, Peanut Butter and Honey Sandwich, Fruit Cocktail, Spice Cake, Milk TUESDAY, OCTOBER 5 Hamburger on a Bun, Pickle Slices, Yellow Wax Beans, Peas, Chocolate Chip Cookies, Milk WEDNESDAY, OCTOBER 6 Spaghetti with Meat Sauce, Buttered Corn, Cinnamon Roll, Applesauce, Milk THURSDAY, OCTOBER 7 Hot Dog on Buttered Bun, Mixed Vegetables, Peaches, Raisin Bar, Milk FRIDAY, OCTOBER 8 Toasted Cheese Sandwich, Buttered Green Beans, Fruit Cup, Cookie, Milk
SMITH	STARKWEATHER
MONDAY, OCTOBER 4 Vegetable Soup, Peanut Butter Sandwich, Cheese Stix, Fruit, Cup Cake, Milk TUESDAY, OCTOBER 5 Sloppy Joe on Buttered Bun, French Fried Potatoes, Fruit Cup, Cookie, Milk WEDNESDAY, OCTOBER 6 Meat and Vegetable Casserole, Buttered Biscuit, Honey Fruit, Milk THURSDAY, OCTOBER 7 Hot Dog on Buttered Bun, Mustard, Catsup, Relish, Buttered Vegetable, Gelatin with Fruit, Cookie, Milk FRIDAY, OCTOBER 8 Fruit Juice, Toasted Cheese Sandwich, Hard Boiled Egg, Buttered Vegetable, Pudding, Milk	MONDAY, OCTOBER 4 Hot Dogs on Buttered Buns, Catsup or Relish Cup, Buttered Corn, Fruit Cup, Cake, Milk TUESDAY, OCTOBER 5 Spaghetti with Meat Sauce, Buttered Green Beans, Iced Cake, Fruit Cup, Milk WEDNESDAY, OCTOBER 6 Vegetable Soup, Grilled Cheese Sandwich, Carrot Sticks, Fruit Cup, Peanut Butter Cookies, Milk THURSDAY, OCTOBER 7 Sloppy Joe on Buns, Tater Tots, Catsup Cup, Fruit Cobbler, Milk FRIDAY, OCTOBER 8 Pizza with Cheese, Buttered Corn, Apple Sauce Cup, Cookies, Milk
TANGER	PIONEER
MONDAY, OCTOBER 4 Bean with Bacon Soup, Crackers, Bread and Butter, Cheese Stick, Fruit, Cake, Milk TUESDAY, OCTOBER 5 Sloppy Joe on Bun, Pickle Slice, Buttered Corn, Fruit, Toll Bar, Milk WEDNESDAY, OCTOBER 6 Oven Fried Fish, French Fries, Hot Buttered Roll, Tomato Slice, Tartar Sauce, Jello, Milk THURSDAY, OCTOBER 7 Hot Dog on Buttered Bun, Buttered Mixed Vegetables, Fruit, Cake, Milk FRIDAY, OCTOBER 8 Toasted Cheese Sandwich, Pickle Slice, Buttered Green Beans, Peanut Butter Brownie, Fruit, Milk	MONDAY, OCTOBER 4 Hamburger Gravy over Mashed Potatoes, Buttered Peas, Hot Biscuit with Butter and Honey, Jello with Topping, Milk TUESDAY, OCTOBER 5 Hot Dog on Roll, Mustard, Catsup, Macaroni and Tomatoes, Chocolate Pudding, Cookie, Milk WEDNESDAY, OCTOBER 6 Baked Meat Loaf or Stuffed Green Peppers, Mashed Potatoes and Gravy, Buttered Green Beans, Choice of Fruits, Milk THURSDAY, OCTOBER 7 Hamburger on Roll, Relishes, Buttered Corn, Choice of Desserts, Cookie, Milk FRIDAY, OCTOBER 8 Baked Macaroni and Cheese, Sliced Tomatoes or Sweet Potatoes, Homemade Roll and Butter, Choice of Fruits, Milk
MIDDLESCHOOL EAST	MIDDLESCHOOL WEST
MONDAY, OCTOBER 4 Sloppy Joe on Buttered Bun, Buttered Corn, Choice of Fruit, Cherry Delight, Milk TUESDAY, OCTOBER 5 Mashed Potatoes, Meat Gravy, Carrot and Celery Sticks, Biscuit and Butter, Chocolate Pudding, Milk WEDNESDAY, OCTOBER 6 Pizza Pie with Meat and Cheese, Cabbage Slaw, Grape or Orange Juice, Apple Crumble, Milk THURSDAY, OCTOBER 7 Hamburgers on Buttered Buns, Relishes, Buttered Green Beans, Choice of Fruit, Peanut Butter Cookie, Milk FRIDAY, OCTOBER 8 Fish Sandwich (See Burger), Tartar Sauce, Cabbage Slaw or Peas and Carrots, French Fries, Lemon Pudding, Milk	MONDAY, OCTOBER 4 Hamburger Gravy Whipped Potatoes, Buttered Peas, Hot Biscuit with Butter and Honey, Jello with Topping, Milk TUESDAY, OCTOBER 5 Sloppy Joe on Roll with Pickles, Buttered Green Beans, Pineapple Slices, Sugar Cookies, Milk WEDNESDAY, OCTOBER 6 Hot Dog on Roll with Trimmings, Hash Brown Potatoes, Assorted Fruit Cup, Peanut Butter Cookies, Milk THURSDAY, OCTOBER 7 Hamburger on Roll with Trimmings, Oven French Fried Potatoes, Assorted Fruit Cup, Banana Cake, Milk FRIDAY, OCTOBER 8 Fishwich / Tartar Sauce, Catsup, Buttered Whole Kernel Corn, Apple sauce Cup, Milk
PLYMOUTH CENTRAL	
MONDAY, OCTOBER 4 Hot Dogs on Bun, Relishes, Potato Chips, Creole of Corn and Tomatoes, Choice of Fruit and Milk TUESDAY, OCTOBER 5 Orange Juice, Submarine Sandwiches, Buttered Green Beans, Plain Jello with Topping, Milk FRIDAY, OCTOBER 8 Samba Fish Sandwich, Tartar Sauce, Potato Chips, Cabbage Salad, Spice Cake, Milk	WEDNESDAY, OCTOBER 6 Mrs. Isbister's Goulash, Toned Salad, Hot Biscuit and Honey, Fruit, Milk THURSDAY, OCTOBER 7 Pork Pattie on Bun, Relishes, Hash Brown Potatoes, Applesauce, Rice Krispie Bar, Milk
INSURANCE FISHER / WINGARD FORTNEY AGENCY	
COMPLETE FINANCIAL PROTECTION WITH MATTHEW G. FORTNEY & EDWIN G. WINGARD	
453-4990	
905 W. ANN ARBOR TRAIL, PLYMOUTH	

plymouth

THROUGH BIFOCALS
By FRED DELANO / Editor: Mail & Observer

PAUL KAMAN might do well to sit in on the meeting Wednesday night of the Fall Festival board of directors, for it's likely to be a session that would give him new insight as to what goes on behind the scenes when small town differences arise over details of the community's biggest promotion.

If you are a real student of these pages, you will recall Kaman as being the author of a recent letter to the editor lauding all of the persons and organizations who had a hand in the '71 festival, which was the first one Kaman ever had attended.

He identified himself as a "transient resident" of the Mayflower and made the comment: "I, and many others, still thought Plymouth was a pause on a dirt road to Ann Arbor. Congratulations. You are very, very fortunate to live here."

One of the things that will add sparkle to the 8 p.m. Wednesday session in City Hall will be the presence of the ladies of the garden club who stirred up a September storm over the placing of festival booths in Kellogg Park. What they hope to do now is work out the '72 plan far, far in advance so that everyone will be happy and certainly not caught by surprise at the last minute.

THE FESTIVAL leaders still are in something of a bind, too, over the proposed purchase of that vacant lot owned by Chuck Finlan between the Penn Theatre and Masonic Temple. At festival time it is used as serving headquarters for all of the big feasts, and the board wants to take it over as a permanent possession.

Contributions have been solicited from individu-

als and clubs, but the lukewarm response forced the board to ask Finlan for an extension of its option from Oct. 1 to Nov. 1, which he has granted. By that time the festival is supposed to come up with a down payment of \$2,311 to apply against the total price of \$46,000.

Maybe "total" is the wrong word to use, though, for actually the interest charges on the 10-year land contract would see the festival shelling out \$70,000-plus for the property between now and 1981.

An updated report on the status of this plan is another matter which could stimulate interesting discussion Wednesday.

THE HOPE HAS BEEN expressed by some directors that the major service clubs of the community will pledge continuing financial support to the property plan, although it will mean an annual bite of about \$7,000.

At the last board meeting, the only director who spoke against the project was Terry West, who commented, "I hate to pass on this responsibility to other festival boards."

Aside from the financial burden, the big question seems to be what use to make of the lot the other 51 weeks of the year. Joe West and Harold Fischer, who are among the biggest boosters of the purchase, are striving to find an acceptable solution to that puzzler.

If they find one that makes sense, their chances for popular support will be strengthened manifold. As it stands right now, Finlan looms as the major winner.

Plymouth Brevities

PLYMOUTH LISA LUPINI, 10-year-old daughter of Mr. and Mrs. Leo Lupini, of 5521 Gottfredson Rd., has added another blue ribbon to her collection of horse show awards.

Lisa and her Arabian horse, Ramesses, came away from the Park Chapman Stables show at Owosso last weekend with first place for sitting and showing.

Christmas weekend, and already one of the community's best "good guy" organizations - the Goodfellows - has started making its plans to see that no kiddie is overlooked.

The first Goodfellow Association meeting of the season will be at 7:30 p.m. Wednesday in the fire station at City Hall, and new blood will be welcomed.

Principal speaker will be James Doyle, coordinator of special projects in the Plymouth school system. He will be accompanied by two or three former drug users, now rehabilitated.

LIONS CLUB members will welcome District Governor Chuck Lavery at their dinner meeting Thursday night in the Thunderbird Inn.

charge of the program, which will deal with conservation. One of the newest projects of the Grange these past months has been to form a junior organization, openings in which are still available.

ALLEN SCHOOL has scheduled an open house for each of its grades in October, when parents, brothers, sisters, et cetera can come and view displays of the work done by the students in their home rooms.

All of the sessions will open at 7:30 p.m. and this will be the schedule: First grade, Tuesday, Oct. 12; second grade, Tuesday, Oct. 19; third grade, Thursday, Oct. 14; fourth grade, Thursday, Oct. 7; fifth grade, Tuesday, Oct. 19; kindergarten, Thursday, Oct. 21.

JULIE JABARA has "kidney candy" for sale as part of the fund raising program of the Kidney Foundation, which also ties in with a project of the Jaycees.

The latter are trying to collect as many Betty Crocker coupons as they can by Dec. 1 in a statewide contest among Jaycee auxiliaries, all of the coupons going toward lifesaving kidney machines. You can give your coupons to Mrs. Michael Conrad, 1051 Roosevelt.

SOROPTIMIST CLUBS throughout the world will be planting trees in their communities Sunday, emblematic of the spirit of peace.

In Plymouth, the ceremony will be conducted at 10 a.m. in Kellogg Park with Soroptimists and city officials joining in the planting of an oak.

EXPLORER SCOUTS formed a new post in Plymouth this month, with young Gary Sincovec named to the office of president.

The post will be known as P-1 and its first project was to schedule a car wash today (Saturday) from 9 a.m. to 6 p.m. at George Smith Realty, Main and Linden. Proceeds will help the scouts with their many programs.

PLYMOUTH ELKS will sponsor a program on youth and control of drugs at 7:30 p.m. Wednesday in their lodge building, 41700 Ann Arbor Rd. The public is welcome.

Holiday Fun

Holidays are a lot of fun. Don't spoil them by not concentrating on your driving. Vacationing is only fun if you get there.

No.1 Chain Saw Buy

from the No. 1 chain saw people



Homelite 150 Automatic Chain Saw

Automatic oiling for bar and cutting chain - adjustable for light or heavy-duty cutting. Automatic all-weather starter for quick 'n' easy starting. Automatic one-piece clutch - the industry's simplest, most reliable clutch. Only \$149.95. Come in and see the 150 - world's best chain saw value! It has all the features you'd expect on more expensive models.

SAXTONS GARDEN CENTER

507 WEST ANN ARBOR TRAIL, PLYMOUTH, MI 48150. HOURS: DAILY 9-6, FRI. 9-8 SAT. 9-5

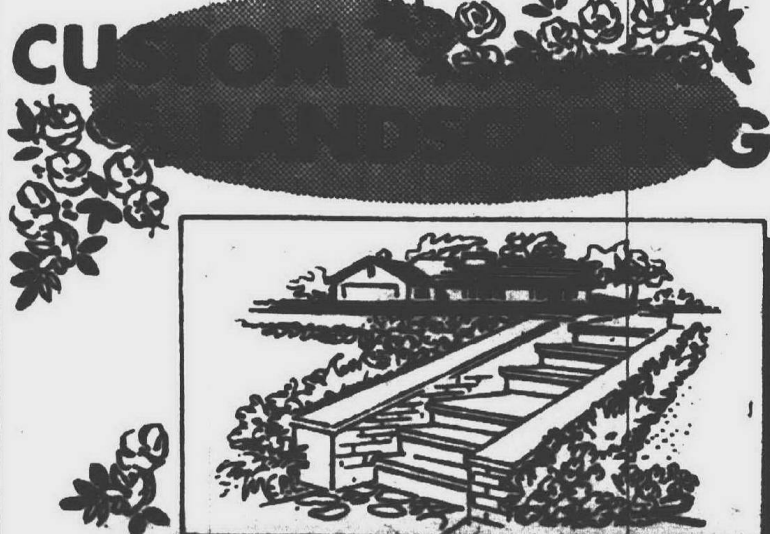
\$20,000

All savings now insured up to \$20,000 by the Administrator, NATIONAL CREDIT UNION ADMINISTRATION, an Agency of the U.S. Government

+5% DIVIDEND On Regular Savings
PLYMOUTH COMMUNITY FEDERAL CREDIT UNION
500 S. HWY 24 Phone 463-1200

WESTLAND GARDEN CTR. & LANDSCAPING

FALL SALE
SAVE UP TO 25%



FREE Landscape Designs

ORNAMENTAL FLOWERING TREES

\$7.95 from

Kwanzan Cherry
Flowering Crab
Dogwoods
Purple Leaf-Plums
Red Bud

Imported HOLLAND BULBS
Darwin Hybrid TULIPS 99" DOZ.
CROCUS Bulbs 79" DOZ.
HYACINTH Bulbs 18" ea. 3/49"
King Alfred DAFFODILS 91" DOZ.

EVERGREENS
TAXUS YEW'S
SPREADING JUNIPERS
from \$6.95
Priced according to size

721-6610

32893 Cherry Hill (between Vinny & Moravian)

KRESGE'S SUNDAY ONLY!

DOORBUSTERS

Big Wheel

10⁸⁸



Reg. \$12.88

<p>Self Adhesive Photo Albums \$1.67 Reg. \$2.67</p>	<p>Imported Holland Ham \$1.00 Reg. \$1.27 lb.</p>	<p>Nylon Ski Jacket \$5.00 Reg. \$6.97</p>	<p>Women's X-Size Panties 5/1.00 Reg. \$1.50</p>
---	---	---	---

360 South Main St. Plymouth, Michigan

Newlyweds Have Home On Campus

Mr. and Mrs. Frederick Jay Jenny are making their home in an apartment on the Taylor University campus at Upland, Ind., following their recent marriage in Covenant Community Church in Redford Township.

Mrs. Jenny is the former Geraldine Carolyn Covert, daughter of Mr. and Mrs. Edward B. Covert of Cranston Avenue, Livonia.

Her husband's parents are Mr. and Mrs. John Frederick Jenny of Glenshaw, Pa. The Rev. John L. Drummond officiated for the Aug. 14 candlelight service.

SOLICITS for the wedding were the bride's sister and brother-in-law, Mr. and Mrs. David Burt of Madrid, Spain, who were married there in June. Mrs. Burt also served as matron of honor for her sister.

Given in marriage by her

father, the bride wore an A-line gown of silk organza with venetian lace trim, and ruffles at the wrist and hemline. With it she wore a white picture hat and carried a tapersy ball with blue cornflowers, white daisies and baby's breath, red sweetheart roses and yellow mums.

Her attendants, along with Mrs. Burt, were Mary Jane Rice of Dubuque, Iowa, maid of honor, and Barbara Osburn of Livonia, Kathy Leisher of Grove City, Ohio, cousin of the bridegroom, and Janice Covert of East Lansing, sister-in-law of the bride. Susie Boos of Livonia was flower girl.

Their chalis gowns were floral printed in red, blue, yellow and green on white, and they wore yellow picture hats and carried nosegays of mixed flowers.

DANIEL JENNY of Glenshaw was best man for his brother. Guests were seated by two brothers of the bride, Bob Covert of East Lansing and Allen Covert, John Jackson of Pittsburgh, Pa., and Tom Peterson of Chesterton, Ind.

Mrs. Jenny wore an aqua gown and Mrs. Covert was in yellow.

The couple greeted 250 guests in a reception in the church's Fellowship Hall before leaving on a New

England and Canada honeymoon.

The new Mrs. Jenny is continuing her studies as a junior at Taylor University.

Her husband, a Taylor graduate, is a graduate student at Ball State University and teaching math at Marion, Ind.



MRS. FREDERICK JAY JENNY
(Geraldine Carolyn Covert)

Perry Jamieson Wed

Perry Jamieson, son of Mr. and Mrs. Harold Jamieson of Farmington, claimed Stephanie Deats as his bride in an Aug. 21 ceremony in the Hartford Street Presbyterian Church in Natick, Mass.

The bride, daughter of Mr. and Mrs. Russell Deats of Holliston, Mass., wore a white dotted swiss gown with a picture hat trimmed in pale yellow.

Her sister, Mrs. Gary Saubedissen, was her only attendant and wore a similar gown of yellow with forest green trim.

Assisting the bridegroom were Gary Saubedissen as best man and Russell Deats III and Frederick Deats as ushers.

The newlyweds had a honeymoon trip south into Virginia and will live in Clawson.

The new Mrs. Jamieson graduated from Michigan State University in 1970 and is nursing at Pontiac State Hospital. Her husband, a 1969 MSU graduate, is working on his master's degree at Wayne State University.

Deborah Dunn Is New Bride

Deborah Ann Dunn became the bride of Jeffery E. Fitzgerald in a recent ceremony in Niagara Falls, N.Y.

A reception for the couple was held in the Farmington

Country Club, and they are living in Fort Lauderdale, Fla.

Their parents are Mr. and Mrs. John C. Dunn and Mr. and Mrs. Gerald Fitzgerald, all of Farmington.

4 Women Are PEO Delegates

Four Observerland women will be delegates to the 50th biennial convention of the Supreme Chapter of the PEO Sisterhood from Oct. 4 to 7 in Cobo Hall, Detroit.

Mrs. Al J. Alford, of Ross, Plymouth; Mrs. F.B. Foust, of Woodland Place, Plymouth; Mrs. Arthur Maus, of Old Homestead Drive, Farmington; and Mrs. Louise Havlik, of Sunnydale, Livonia, will attend the convention.

Mrs. Alford is chairman of the souvenir convention kits and Mrs. Foust is first vice president of the Michigan State Chapter.

The speakers on the first day of the convention will be Evelyn Moore, who was sponsored by the Plymouth P.E.O. Chapter A1. She was named the outstanding woman of the year in 1969 and was involved in the pilot project in Ann Arbor which developed into Headstart.

The P.E.O. is a philanthropic organization whose interest are directed to education for women. Nearly 2,000 delegates from 50 states are expected to attend the convention.

Local Lammie Class Starts

A series of the classes for expectant parents offered by the Lammie Childbirth Preparation Association will begin Oct. 5 in Plymouth.

Interested couples can contact Mrs. Alan Woodworth, 171 Blunk, Plymouth, for registration.

The course includes films, lectures, and exercises to prepare both husband and wife for the birth of their child. It provides a thorough understanding of the birth process. Since it was started three years ago, 400 Plymouth couples have participated.

DICK BENSEK

Most of us don't realize it, but authorities tell us that vegetables are an acquired taste, not an inherent one. In fact, vegetables probably started as starvation foods — foods people ate when they couldn't get meat. The bean, for example, is very old. Samples of it have been found as far back as the Neolithic period. The turnip is also very old, so old that no one has been able to trace the date when it was first cultivated. The original persimmon, too, is lost in antiquity. The carrot, on the other hand, comes to us from the eighteenth century, when it was first cultivated; and the popularity of the potato is due to Louis XIV and Frederick the Great. Gradually then, we have acquired our vegetable tastes. Spinach today. Who knows, maybe South Seas see urchin tomorrow? Today — Tomorrow! — Always! — You'll find only the finest of foods cooked and served at DANISH INN CORP., 32306 Grand River Ave., 478-5320. We honor most credit cards and have a complete menu for your selection including three daily specials on our lunch menu. Open: 11 a.m. - 2 a.m. with dinners during the week until 10 p.m., Fri. and Sat. until 1 a.m. Reservations on the weekend.

HELPFUL HINT: To wash beans, put them in your flour sifter and let water run over them. The water will both wash the beans, and dissolve those little hard pieces of dirt.

FARM FRESH PRODUCE

now available at

CLYDE SMITH and SONS

8888 NEWBURGH 425-1434

Custom Picture Framing and Oil Restoration

The art in your home will take on a new elegance when you have our experienced designer assist in your home redecorating.

ST. CLAIR ART GALLERY

30940 Jay Road, Bldg. 6, Midland, MI 48640 or 937-1144. Daily 10:00 a.m. to 6:00 p.m. Tuesday and Saturday 9 to 6.

FABRIC TILLAGE

... Has the Most Exciting Fabrics!

- Everything for Sewing
- Complete Patterns and Notions in Stock
- Beautiful Selection of Fabrics for Brides and Bridal Parties

25531 W. 7 Mile, 3 blks. E. Beech

REDFORD TOWNSHIP
MONDAY thru FRIDAY 10-9
SATURDAY 9-4:55-30

Parking Lot At Rear
KE 3-1099

TAKE YOUR FAMILY OUT TO DINNER AT HINES PARK RESTAURANT

COMPLETE
CHICKEN
DINNER
\$1.69
EVERY MONDAY



FISH FRY
COMPLETE
DINNER
\$1.49
EVERY WEDNESDAY

Children Under 12 1/2 Price!!

ALL YOU CAN EAT!

ALSO: Complete Menu to Select From

BANQUET FACILITIES

HINES PARK RESTAURANT

30940 PLYMOUTH ROAD

Corner Plymouth & Ann Arbor Roads - 522-5566

HOURS DAILY: 7 a.m. to 10 p.m. 7 Days a Week



NORTHWESTERN MUTUAL LIFE-MILWAUKEE

World's largest company specializing in individual life insurance.

OUR DIVIDEND SCALE HAS GONE UP 14 TIMES IN THE PAST 15 YEARS—INCLUDING 1971.

will open a DISTRICT OFFICE in OBSERVERLAND this year.

A District Agent's franchise and several Soliciting Agents' contracts

will be available only to highly qualified local residents.

It is our policy to acknowledge all inquiries. Successful applicants will participate fully in all decisions relating to business development.

Address inquiries to:

James A. Edwards, C.L.U., General Agent
The NML Insurance Co.

Executive Plaza, Suite 790
Detroit, Michigan 48226

amusements

Metamorphosis At Churchill

The Churchill High School Band will present the Symphonic Metamorphosis in concert Tuesday, Oct. 5, at 8 p.m.

The Metamorphosis, the rock ensemble from the Detroit Symphony Orchestra, will perform in the high school auditorium, 8900 Newburgh, Livonia.

Tickets will be on sale at the school and at the door.

In the afternoon, at 1:30, the group will give an hour and a half clinic for Livonia music students.

THE GROUP HAS just returned from appearing at the new Kennedy Center for the Performing Arts in Washington, D.C. During the summer it was a rock group in residence at Oakland University and was featured in performances at Tanglewood Music Festival with Ray Charles.

In the group are seven young men, all presently

members of the Detroit Symphony. Dave Krebbel is principal French horn with the symphony and Tom Bacon is assistant. Krebbel is also director of the Brass Choir of Wayne State University. He plays the bass trumpet and bass guitar.

Wes Jacobs, who plays tuba with the symphony, was bass guitar for four years with the Carpenters. He has also played for the American Ballet Theatre.

Erv Monroe, who is principal flute with the symphony, is a composer, lead guitarist, flutist and vocalist for the Metamorphosis.

Larry Ragland, who traveled with the Jimmy Dorsey Band, plays bassoon with the symphony, and sax and bassoon with the Metamorphosis.

Sam Tundo is a percussionist and also does vocals with the group.

Casting Call

The Plymouth Theatre Guild will hold tryouts for its first production of the season Monday, Oct. 4, at 8 p.m., in Central High School (the old Plymouth High School), Church and Main.

The play "Never Too Late" by Sumner Arthur Long is tentatively scheduled for production Dec. 9, 10 and 11.

Poetess To Speak

Poetess Anne Waldman will make two appearances at Schoolcraft College to read and discuss her work, kicking off the fall series of visiting poets on campus.

Miss Waldman will be at Schoolcraft at 3 and 8 p.m., Wednesday, Oct. 6, in the lower level of Waterman Campus Center. The public

may attend. There is no charge for admission.

Miss Waldman is a resident of New York City where she directs the poetry project at St. Mark's Church in - The Bowery, and is co-editor of Angel Hair Books. Her books include "Baby Breakdown," "Giant Night," and "No Hallelujah."

Can you name
the three best
radio stations in
Detroit?

(Here's some help - - Now
see if you can finish!)

1. **wild a.m. 1090**

2. _____

3. _____

Brides-To-Be Make Betrothals Known

KIMBERLY COWSERT

Mr. and Mrs. Oliver O. Wenger of St. Clair Shores announce the engagement of their daughter, Kimberly Ann Cowsert, to Michael Potter, son of Mr. and Mrs. Robert Potter of Wakendon Avenue, Redford Township. The bride-elect is a graduate of Michigan State University and employed by the K.B. Shop in Royal Oak. Her fiancé, a graduate of St. Mary's of Redford High School, served four years in the U.S. Air Force and is employed by Michigan Bell Telephone Co. They plan to be married in April.

DEBORAH BAGWELL

Mr. and Mrs. Charles Bagwell of Lathers Street, Livonia, announce the engagement of their daughter, Deborah, to James Alverson, son of Mr. and Mrs. Henry Alverson of Green Lane, Livonia. Miss Bagwell graduated from Stevenson High School and attended Schoolcraft College. She is employed at Montgomery Wards. Her fiancé, who graduated from Bentley High School, is employed by Borman Foods Inc. They plan to be married July 1, 1972.

VICTORIA CUMMINS

Mr. and Mrs. Kenneth Cummins of Northville announce the engagement of their daughter, Victoria Lynn, to David Kenneth Aird, son of Mr. and Mrs. Kenneth Aird of Surrey Drive, Livonia. The bride-elect is a 1971 graduate of Farmington High School and will attend the Detroit College of Business this fall. Her fiancé, a 1970 graduate of Stevenson High School, is employed by the Michigan Bell Telephone Co. and attends Schoolcraft College. They plan a Feb. 19 wedding.

GAIL ST. AUBIN

Mr. and Mrs. Norman St. Aubin of Auburndale Avenue, Livonia, announce the engagement of their daughter, Gail Elizabeth, to David Robert Collins, son of Mr. and Mrs. Robert V. Collins of Michele Avenue, Livonia. The bride-elect is a 1969 graduate of Stevenson High School and is a junior in the University of Michigan school of music. Her fiancé graduated from Franklin High School in 1969 and is a junior majoring in political science at U-M. No wedding date has been set.

LAURA PLICHTA

Mr. and Mrs. Robert R. Plichta of Middle Belt Road, Farmington, announce the engagement of their daughter, Laura Jane, to Russell F. Raiff, son of Mr. and Mrs. Barton F. Raiff of Watervliet, Mich. Both are seniors at Western Michigan University, where the bride-elect is majoring in home economics and a member of Alpha Sigma Alpha sorority and her fiancé is a mechanical engineering student. They plan to marry May 6.

CHERYLE GALLA

Mr. and Mrs. Charles Galla of Livonia announce the engagement of their daughter, Cheryle Ann, to William David Collett, son of Mr. and Mrs. William Collett of Livonia. Both are graduates of Bentley High School. The bride-elect is employed as a secretary by Wolverine Chalkboard Co. and her fiancé is a boiler technician in the U.S. Navy, stationed aboard the USS Mr. Hood at Concord, Calif. They plan to marry in the fall of 1972.

DIANE WHITE

Mr. and Mrs. Norman O. White of Farmington announce the engagement of their daughter, Diane Lynn, to Lance Darryl Oak, son of Mrs. Floyd Oak of Farmington and the late Mr. Oak. Both are 1967 graduates of North Farmington High School. The bride-elect is a student at a Central Michigan University and her fiancé will graduate in December from Olivet College. They plan to marry Dec. 22 in the First United Methodist Church of Farmington.

BONNIE TOTTEN

Mr. and Mrs. Richard Totten of W. Chicago, Livonia, announce the engagement of their daughter, Bonnie Lynn, to Charles H. Kraft, son of Mr. and Mrs. Charlie Kraft of Warren. The bride-elect graduated from Eastern Michigan University in June, 1971, and is a physical education teacher in the Wyandotte Public Schools. Her fiancé is also from Olivet College. They plan to be married Nov. 6.



LORRAINE BARON

Mr. and Mrs. Richard Baron of Centralia Street, Redford Township, announce the engagement of their daughter, Lorraine, to Albert G. Giera, son of Mr. and Mrs. George Giera of Detroit. Miss Baron is a nurse at Mt. Carmel Mercy Hospital and Medical Center, and her fiancé attends the Lawrence Institute of Technology. They plan to be married in the summer of 1972.



MARJORIE MAGILL

Mr. and Mrs. Robert W. Magill of Hubbard Road, Livonia, announce the engagement of their daughter, Marjorie Eileen, to David J. Goodell, son of Mr. and Mrs. Lester L. Goodell of Lori Avenue, Livonia. Miss Magill and her fiancé are 1969 graduates of Bentley High School. He is currently a junior at the Michigan Technological University. A Dec. 18 wedding is planned.



RITA KIEFER

Mr. and Mrs. Norman C. Kiefer of Greenbriar Court, Plymouth, announce the engagement of their daughter, Rita M., to James E. Moyle, son of Mr. and Mrs. Robert J. Moyle of Ypsilanti. The bride-elect graduated from Plymouth High School in 1971. Her fiancé is studying electronics at Washburn Community College. They plan to be married in June 1972.



KAREN BELKO

Mr. and Mrs. John L. Belko of Gary Lane, Livonia, announce the engagement of their daughter, Karen Susan, to Jeffery Robert Zokas, son of Mr. and Mrs. Robert Zokas of Balmoral Drive, Livonia. Miss Belko is an art education major at Western Michigan University and is a member of the Alpha Chi Omega Sorority. Her fiancé is majoring in architecture at the Lawrence Institute of Technology.



JANICE ICENOGL

Mrs. William Icenogle of Redford Township announces the engagement of her daughter, Janice Carol, to Richard E. Deason, son of Mr. and Mrs. Ernest Deason of Bloomfield Hills. The bride-to-be is a graduate of Western Michigan University and her fiancé attends Walsh Institute. The wedding date is Oct. 16.

Mr. and Mrs. Michael Galinis of Randall Street, Farmington, announce the engagement of their daughter, Patricia Ann, to Gary B. Rendall, son of Mr. and Mrs. H. B. Rendall of Houston, Texas. An October wedding is planned.



PAT GALINIS



ANGELA LAMPTON

Mr. and Mrs. Levi H. Lampton of Postiff Drive, Plymouth, announce the engagement of their daughter, Angela, to Glen A. Jewell, son of Mr. and Mrs. Gordon Jewell of Sunset Street, Plymouth. The bride-elect graduated from Plymouth High School in 1968, and her fiancé graduated in 1963. He is employed by B & F Auto Supply, Plymouth. No date has been set for the wedding.



JUDITH BISHOP

Mrs. Vernell Bishop of Five Mile Road, Plymouth, announces the engagement of her daughter, Judith Ann, to Donald R. Good, son of Mr. and Mrs. Stanley Good of Plymouth. The bride-elect is a 1971 graduate of Plymouth High School and attends Plymouth Beauty College. Her fiancé graduated from Plymouth High in 1968 and is employed by Chevrolet division of General Motors Corp. They plan a January wedding.



KAREN ANDRES

Mr. and Mrs. Abram Andres of Susanna Avenue, Livonia, announce the engagement of their daughter, Karen Jeanette, to Emmett A. Holmes, son of Mr. and Mrs. George W. Holmes of Munger Avenue, Livonia. The bride-to-be is a 1969 graduate of Stevenson High School and employed by Michigan Bank-america in Southfield. Her fiancé graduated in 1969 from Bentley High School and attends Schoolcraft Community College. He is employed by Creative Magnetics in Redford. They plan to be married Nov. 20.



PATRICIA FLOWERS

Mr. and Mrs. Roger Flowers of Lenore Street, Redford Township, announce the engagement of their daughter, Patricia Ann, to Frank Joseph Gallagher, son of Mr. and Mrs. James Gallagher of Chester, Pa. Miss Flowers is a graduate of Redford Union High School and Michigan State University. She presently teaches business education at Thurston High School in South Redford. Her fiancé is a graduate of the University of Michigan and plays football for the Detroit Lions. The wedding will take place on March 25, 1972.



SHERRIE BROOME

Mr. and Mrs. Herbert R. Broome of Tavistock Street, Plymouth, announce the engagement of their daughter, Sherrie Lee, to Warren William Wheeler, son of Mr. and Mrs. Warren E. Wheeler of Joy Road, Plymouth. The wedding will take place Feb. 19.

APOSTOLIC

SPECIAL SERVICES
Sunday Night Only
APOSTOLIC FAITH
Clothing of Power Ministry
7:30 p.m.
American Legion Hall
31775 Grand River
Farmington 478-7284

CHRISTIAN CHURCH

(Disciples of Christ)
LIVONIA CHRISTIAN CHURCH
38075 7 Mile Rd. 478-6923
Interim pastor
Dr. Charles Meredith
Church school 9:30 a.m. (Sept.-June)
Morning Worship 11 a.m.

LUTHERAN

Wisconsin Evangelical Lutheran Churches
WISCONSIN LUTHERAN
RADIO HOUR WORSHIP 9:31 PM
Sunday 11 a.m.

In Livonia --
St. Paul's Ev. Lutheran Church
17810 Farmington Rd.
Pastor: Wilfred Koebler 422-9814
Worship Services: 8:30 and 11 a.m.
Sunday School: 9:45 a.m.

In Plymouth --
St. Peter's Ev. Lutheran Ch.
1343 Pennington Avenue
Pastor: Leonard Koenniger 453-3353
Worship Services: 8:30 and 10:30 a.m.
Sunday School: 9:45 a.m.

In Redford Township --
Lola Park Ev. Lutheran Ch.
14780 Kintoch
Pastor: Edward Zell 532-8655
Worship Services: 8:30 and 11 a.m.
Sunday School: 9:45 a.m.

In Westland --
Our Savior Ev. Lutheran Ch.
Warren at Farmington Rd.
Pastor: Jack A. DeHart 427-8119
Worship Services: 8:30 and 11 a.m.
Sunday School: 9:30 a.m.

LUTHERAN CHURCH OF THE RISEN CHRIST
Missouri Synod
48290 Ann Arbor Road
(M-141) City of Plymouth
Rev. Kenneth E. Zielke
453-5262 453-1099

Worship Services
every Sunday 10:15 a.m.
Sunday School and
Bible Class 9 a.m.
(Nursery Provided)

St. Paul's Lutheran Church and School
(Missouri Synod)
Middlebelt at 8 Mile Rd.
474-0675
J. Walther, Principal
W. F. Rutkowski, Pastor
8:30 and 11 a.m. Worship Services
(Nursery Provided)
Sunday School and
Bible Classes 9:40 a.m.

PRINCE OF PEACE LUTHERAN CHURCH
(Missouri Synod)
12 Mile at Farmington Rd.
474-0210
Rev. Victor H. Mesenbring
Worship Services
8 and 10:45 a.m.
Sunday School at 9:15 a.m.
(Nursery Provided)

TIMOTHY
8820 Wayne Road, Livonia
Pastor: George Fischer
Worship Services: 8:30 and 11 a.m.
Sunday Church School: 9:45 a.m.
427-2250 or 425-3194
Nursery Provided

LUTHERAN CHURCH IN AMERICA

CHRIST THE KING
9300 Farmington Road
421-0749 464-2906

The Rev. John A. Root
Worship Services: 8:15 and 11 a.m.
Church School: 9:30 a.m.

HOLY CROSS
30650 West Six Mile
Pastor: William C. Lindholm
427-1414 464-3908

Worship, Church School and
Nursery 9:30 and 11 a.m.

In Redford --
ST. JOHN'S
13842 Mercedes
Pastor: Karlo Kelp
538-2880 531-4182

Worship and Sunday School
9:45 and 11 a.m.
(Nursery provided)

In Farmington
LUTHERAN CHURCH OF THE INCARNATION
30333 W. 10 Mile Road Farmington
Gary W. Cowell - Pastor
474-5318 476-3335

8:30 a.m. - Sunday School
11 a.m. - Sunday Worship
7:30 p.m. Wednesday - Small Group Worship

FOR INFORMATION CALL
MISS KATHY PORTER
261-8600 Ext. 250

FAITH LUTHERAN CHURCH
30000 Five Mile Road
Holy Communion
Every Sunday
Worship: 8:30 and 10:30 a.m.
421-7249

HOLY TRINITY LUTHERAN CHURCH
(Missouri Synod)
39020 Five Mile Rd.
between Newburgh
and Haggerty Roads
Office Phone 484-0211
The Rev. Fred Balke, Pastor
Sunday Worship Service
9 a.m. and 10:30 a.m.
(Nursery and Sunday School Bibles, Book Services)

AMERICAN LUTHERAN CHURCHES

SWORD OF THE SPIRIT
34563 Seven Mile Road, Livonia
Pastor: William D. Wolfe
Family Worship 10 a.m.
Study for All Ages 11 a.m.
Phone 478-3818 or 591-8885

CHRIST LUTHERAN
14380 Wormer Road, Redford
Worship 10 a.m.
Sunday Church School 9 a.m.
534-3482

ST. JOHN
23225 Gilt Road, Farmington
Pastor: Charles Fox
474-0584 or 474-4499
Worship: 8:30 and 11 a.m.
Sunday School: 9:40 a.m.
Nursery Provided

CHURCH DIRECTORY

CHURCH OF CHRIST

MEMORIAL CHURCH OF CHRIST
(CHRISTIAN CHURCH)
35475 Five Mile Livonia
BIBLE SCHOOL 9 a.m.
MORNING WORSHIP 10 a.m. (Nursery provided)
8:30 p.m. Youth meeting and evening worship
Rev. Carlisle, Minister
Orly Fox, Youth Minister

EPISCOPAL

THE Episcopal Church
welcomes you
Holy Spirit, Westland
34845 Cowan Rd.
281-9460
(Serving Southwest Livonia)
Sunday Worship 8 a.m. and 10 a.m.
transportation available - call church

UNITED METHODIST

FIRST UNITED METHODIST CHURCH
of Garden City
6443 Merriman Road
Phone: 421-8628
Minister: Rev. Glenn Kjetilberg
SUNDAY SCHOOL
10 a.m.
Infants through 6th grade
11:10
Adults, Young Adults,
Sr. High and Jr. High
MORNING WORSHIP
10 a.m. only

NEWBURG UNITED METHODIST CHURCH
Rev. William Riser, Minister
Rev. Ben Bohmstedt, Asst. Minister
522-1827
"A Morning of Praise and Prayer"
Bishop Dwight E. Lader
8:15 and 11 a.m.

ALDERSGATE UNITED METHODIST CHURCH
(Redford Township)
10000 Beach-Daly Road
(Between Plymouth and West Chicago)
533-7905
Ministers
Wm. G. Wager and Wm. M. Smith
Dr. of Education, Mrs. Theo Wright
MORNING WORSHIP
9:30 and 11 a.m.
Church School 9:30 and 11
Baby care provided for all services

NARDIN PARK UNITED METHODIST CHURCH
Farmington
28887 West 11 Mile Road
476-8880
William D. Marcor,
Senior Minister
Meredith T. Mohrman,
Associate
Ministers of Music
Ira Slater and
George T. Selt
Worship Services
9:15 and 11 a.m.
"When Deep Calls unto Deep"
Communion Sunday
Dr. William Marcor
Sunday School
for all ages
9:15 a.m.

CLARENCEVILLE UNITED METHODIST CHURCH
30300 Middlebelt, Livonia GR 4-3563
9:00 a.m. First Worship Service
10:15 a.m. The Church School
11:15 a.m. Second Service of Worship
8:30 p.m. Youth Meetings
7:30 p.m. The Evening Service
7:30 p.m. Wednesdays - The end Work
Services
Elsie A. Johns, Minister
Nursery provided in all services

FIRST UNITED METHODIST CHURCH of Farmington
33112 Grand River GR 4-6573
Worship, Church School and Nursery
9:30 and 11 a.m.
Rev. Hugh C. White
Rev. Howard F. Snell

St. Matthew's United Methodist Church
10950 Six Mile Road
422-8539
Paul T. Hart, Pastor
Jerome K. Smith, Associate Pastor
9:30 and 11 a.m. Worship
Nursery Available
9:30 a.m. Church School (All Ages)
St. High Fellowship (Sunday 7 p.m.)
St. High Fellowship Tuesday 7 p.m.

TEMPLE BAPTIST CHURCH

23800 W. Chicago

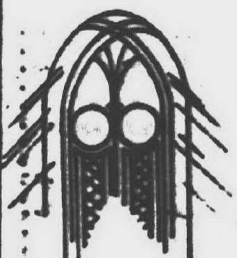
Dr. G. B. Vick, Pastor

Sunday School 10 a.m.
Morning Worship 11 a.m.
Bible Study 7 p.m.

Speakers

11 a.m., Dr. G. B. Vick
7 p.m., Dr. Wendell Zimmerman
Jacksonville, Florida
Lesson: Acts 4:1-12

FREE BUS TRANSPORTATION
TO SUNDAY SCHOOL
Call 258-3337



WBLZ-FM Detroit
Friday 7-7:45 p.m.
Saturday 7-7:30 p.m.

WBLZ Channel 50
Sundays 6:30-9 a.m.



Rev. Ritter said the new wing adds about 5,000 square feet of floor space and cost \$125,000 including carpeting, landscaping and some work on the older part of the building. The architectural firm is Morison, Shiels and Associates, Inc.

NOW IN ONE VOLUME

THE LIVING BIBLE

PARAPHRASED

**THE WORLD'S
GREATEST
SERMONS
EVER**

**NEW
REVISED EDITION**

**OVER 1 PARAPHRASED
AND SERMONED BY
OVER 100 MEN**

alpha

BOOKSTORE

the general heading of "The Pursuit of Loneliness" in St. Clare of Assisi Church, Farmington.

"The Pursuit" is a four-week adult series opening Oct. 7 at the church, 28200 W. 10 Mile (near Middle Belt). Middle Belt).

THE THURSDAY EVENING course will be based on the book "The Pursuit of Loneliness: American Culture at the Breaking Point," by Philip Slater, and will be conducted by the Rev. Richard Fournier.

Each evening there will be a presentation with films, a discussion and celebration of the Eucharist. Sessions will run from 6 to 10:30 p.m.

"I Only Work Here," the opening session, will deal with problems created by the hectic pace of today's world which frustrates a basic human desire to live in trust and cooperation with others.

"Black, White, Green, Red" deals with man's need to engage the social and interpersonal problems of his environment. This will be discussed Oct. 14.

On Oct. 21, the topic will be "But Mother, I'd Rather Do It Myself," and is based on the thesis that control of one's life is too important for the individual-he must share it.

The final presentation, "Jesus in the Subdivision," will be Oct. 28, and will show how the modern man of faith

THE REV. RICHARD FOURNIER

responds to "American culture at its breaking point."

SLATER'S BOOK says that in America "an enormous technology seems to have set itself the task of making it unnecessary for one human being ever to ask anything of another in the course of going about his daily business. Even within the family, Americans are unique in their feeling that each member should have a separate room, and even a separate telephone, television and car, when economically possible. We seek more and more privacy, and feel more and more alienated and lonely when we get it..."

Father Fournier is on special assignment to the Farmington and Southfield areas in adult programs. He received his MA in theology from the University of Windsor and has also studied psychology extensively. He has been principal-in-charge of Catholic (adult, women) programs in the Archdiocese of Detroit, and has made innovative use of films and music in worship.

FLOYD VERT — Services for Mr. Vert, 52, of 21429 Lundy Avenue, Farmington, Conn., will be held at the First Funeral Home with the Rev. Homer Small officiating. Burial followed in Parkview Memorial Cemetery.

Mr. Vert died Sept. 25 at the Veterans' Hospital in An Arbor. He was a member of Eagles Lodge Aerie 2285 in Redford and was a World War II veteran. A 10-year Farmington resident, he was a bricklayer and mason.

Survivors include: his wife, Marie M. Vert; four sons, David M. Vert, James P. Vert, and Henry Vert, all of Farmington; and Larry D. Vert of Detroit; two brothers, Ralph Vert and Caleb Vert, both of Detroit; and a sister, Mrs. Shirley Hills of Farmington.

JOSEPH M. O'HARA — Services for Mr. O'Hara were held recently in Our Lady of Good Counsel, Catholic Church, in Farmington with the Rev. C. Francis C. Byrne officiating. Burial followed in Riverside Cemetery. Arrangements were made by Scheuler Funeral Home.

Mr. O'Hara, 36, of 1749 Gloucester, Plymouth, was a partner in O'Hara Canning Co. and sales representative for J.L. Hoffman Food Center Co. He died Sept. 24 at St. Joseph Hospital in An Arbor after a five-month illness. He was a member of Our Lady of Good Counsel, the Catholic church in Farmington and a former member of the Plymouth Jaycees.

Survivors include: his wife, Betty Lou O'Hara; a son, Lawrence J. O'Hara; a daughter, Linda Marie O'Hara; his parents, Mr. and Mrs. Gust B. O'Hara; and two brothers, Edward O'Hara of Woodstock and Patrick O'Hara of Plymouth.

ALFARITA FERRER — Services for Mrs. Ferrer, 55, of 27057 Elm Valley, Farmington, was held recently in the Taylor Funeral Home with Rev. Benjamin J. DeBruin officiating. Burial followed at Riverside Memorial Cemetery.

A five-year Farmington resident, Mrs. Ferrer died Sept. 26 at St. Ann's Grand Hospital.

Survivors include: her husband, Abraham L. Ferrer; his daughter, Mrs. Joseph Wark of Farmington; and two sons, Joseph and Albert.

WILLIAM E. HARRIS — Services for Mr. Harris, 55, of 1932 W. Main, Farmington, Conn., were held recently in the Western Burial Home with the Rev. Lawrence Kline officiating. Burial followed in Oakland Hills Memorial Gardens in Nap.

A Farmington High School graduate, Mr. Harris was a resident of Farmington before moving to New York. A World War I veteran, he worked as tool and die maker for the Chevrolet Company. He died Sept. 21 at his home.

Survivors include: his wife, Angeline; two sons, Roger Russell and Warren Harris; six daughters, Barbara, Elaine, Mrs. Thomas Skowicki of Wethersfield, Mrs. Albert Vart and Mrs. Richard Bryant both of Walling Lake, and Mrs. David Wolfe of Brighton; his mother, Mrs. Louisa Harris of Farmington Township; a sister, Mrs. Harold Stearns of Plymouth; and nine grandchildren.

CATHLEEN H. TURNER — Services for Cathleen Turner, 12, of 33995 Colony Park Drive, Farmington Township, were held recently in St. John's Catholic Church and the Western Burial Home. Burial followed with clergy. Charles P. Mahoney officiated. Burial followed in Holy Sepulchre Cemetery.

A student at Catholic Junior High School, she was a member of St. John's. She died Sept. 17 at Graceland General Hospital.

Survivors include: her parents, Mr. and Mrs. John P. Turner; a sister, Cathleen H. Turner; her grandparents, Mr. and Mrs. John W. Turner of Graceland Lake and Mr. and Mrs. Charles R. Stone of Sussex.

NOW IN ONE VOLUME
THE LIVING BIBLE
PARAPHRASED
THE WORLD'S
MOST
REMARKABLE
PROJECT
"The Living Bible" is the
most important work of our
time. It is the most
valuable gift you can give
yourself or your family.
It is the most complete
and accurate paraphrase
of the Bible ever published.
It is the most readable
and understandable
version of the Bible ever
published. It is the most
valuable gift you can give
yourself or your family.
It is the most complete
and accurate paraphrase
of the Bible ever published.
It is the most readable
and understandable
version of the Bible ever
published. It is the most
valuable gift you can give
yourself or your family.
It is the most complete
and accurate paraphrase
of the Bible ever published.
It is the most readable
and understandable
version of the Bible ever
published. It is the most
valuable gift you can give
yourself or your family.
It is the most complete
and accurate paraphrase
of the Bible ever published.
It is the most readable
and understandable
version of the Bible ever
published. It is the most
valuable gift you can give
yourself or your family.
It is the most complete
and accurate paraphrase
of the Bible ever published.
It is the most readable
and understandable
version of the Bible ever
published. It is the most
valuable gift you can give
yourself or your family.
It is the most complete
and accurate paraphrase
of the Bible ever published.
It is the most readable
and understandable
version of the Bible ever
published. It is the most
valuable gift you can give
yourself or your family.
It is the most complete
and accurate paraphrase
of the Bible ever published.
It is the most readable
and understandable
version of the Bible ever
published. It is the most
valuable gift you can give
yourself or your family.
It is the most complete
and accurate paraphrase
of the Bible ever published.
It is the most readable
and understandable
version of the Bible ever
published. It is the most
valuable gift you can give
yourself or your family.
It is the most complete
and accurate paraphrase
of the Bible ever published.
It is the most readable
and understandable
version of the Bible ever
published. It is the most
valuable gift you can give
yourself or your family.
It is the most complete
and accurate paraphrase
of the Bible ever published.
It is the most readable
and understandable
version of the Bible ever
published. It is the most
valuable gift you can give
yourself or your family.
It is the most complete
and accurate paraphrase
of the Bible ever published.
It is the most readable
and understandable
version of the Bible ever
published. It is the most
valuable gift you can give
yourself or your family.
It is the most complete
and accurate paraphrase
of the Bible ever published.
It is the most readable
and understandable
version of the Bible ever
published. It is the most
valuable gift you can give
yourself or your family.
It is the most complete
and accurate paraphrase
of the Bible ever published.
It is the most readable
and understandable
version of the Bible ever
published. It is the most
valuable gift you can give
yourself or your family.
It is the most complete
and accurate paraphrase
of the Bible ever published.
It is the most readable
and understandable
version of the Bible ever
published. It is the most
valuable gift you can give
yourself or your family.
It is the most complete
and accurate paraphrase
of the Bible ever published.
It is the most readable
and understandable
version of the Bible ever
published. It is the most
valuable gift you can give
yourself or your family.
It is the most complete
and accurate paraphrase
of the Bible ever published.
It is the most readable
and understandable
version of the Bible ever
published. It is the most
valuable gift you can give
yourself or your family.
It is the most complete
and accurate paraphrase
of the Bible ever published.
It is the most readable
and understandable
version of the Bible ever
published. It is the most
valuable gift you can give
yourself or your family.
It is the most complete
and accurate paraphrase
of the Bible ever published.
It is the most readable
and understandable
version of the Bible ever
published. It is the most
valuable gift you can give
yourself or your family.
It is the most complete
and accurate paraphrase
of the Bible ever published.
It is the most readable
and understandable
version of the Bible ever
published. It is the most
valuable gift you can give
yourself or your family.
It is the most complete
and accurate paraphrase
of the Bible ever published.
It is the most readable
and understandable
version of the Bible ever
published. It is the most
valuable gift you can give
yourself or your family.
It is the most complete
and accurate paraphrase
of the Bible ever published.
It is the most readable
and understandable
version of the Bible ever
published. It is the most
valuable gift you can give
yourself or your family.
It is the most complete
and accurate paraphrase
of the Bible ever published.
It is the most readable
and understandable
version of the Bible ever
published. It is the most
valuable gift you can give
yourself or your family.
It is the most complete
and accurate paraphrase
of the Bible ever published.
It is the most readable
and understandable
version of the Bible ever
published. It is the most
valuable gift you can give
yourself or your family.
It is the most complete
and accurate paraphrase
of the Bible ever published.
It is the most readable
and understandable
version of the Bible ever
published. It is the most
valuable gift you can give
yourself or your family.
It is the most complete
and accurate paraphrase
of the Bible ever published.
It is the most readable
and understandable
version of the Bible ever
published. It is the most
valuable gift you can give
yourself or your family.
It is the most complete
and accurate paraphrase
of the Bible ever published.
It is the most readable
and understandable
version of the Bible ever
published. It is the most
valuable gift you can give
yourself or your family.
It is the most complete
and accurate paraphrase
of the Bible ever published.
It is the most readable
and understandable
version of the Bible ever
published. It is the most
valuable gift you can give
yourself or your family.
It is the most complete
and accurate paraphrase
of the Bible ever published.
It is the most readable
and understandable
version of the Bible ever
published. It is the most
valuable gift you can give
yourself or your family.
It is the most complete
and accurate paraphrase
of the Bible ever published.
It is the most readable
and understandable
version of the Bible ever
published. It is the most
valuable gift you can give
yourself or your family.
It is the most complete
and accurate paraphrase
of the Bible ever published.
It is the most readable
and understandable
version of the Bible ever
published. It is the most
valuable gift you can give
yourself or your family.
It is the most complete
and accurate paraphrase
of the Bible ever published.
It is the most readable
and understandable
version of the Bible ever
published. It is the most
valuable gift you can give
yourself or your family.
It is the most complete
and accurate paraphrase
of the Bible ever published.
It is the most readable
and understandable
version of the Bible ever
published. It is the most
valuable gift you can give
yourself or your family.
It is the most complete
and accurate paraphrase
of the Bible ever published.
It is the most readable
and understandable
version of the Bible ever
published. It is the most
valuable gift you can give
yourself or your family.
It is the most complete
and accurate paraphrase
of the Bible ever published.
It is the most readable
and understandable
version of the Bible ever
published. It is the most
valuable gift you can give
yourself or your family.
It is the most complete
and accurate paraphrase
of the Bible ever published.
It is the most readable
and understandable
version of the Bible ever
published. It is the most
valuable gift you can give
yourself or your family.
It is the most complete
and accurate paraphrase
of the Bible ever published.
It is the most readable
and understandable
version of the Bible ever
published. It is the most
valuable gift you can give
yourself or your family.
It is the most complete
and accurate paraphrase
of the Bible ever published.
It is the most readable
and understandable
version of the Bible ever
published. It is the most
valuable gift you can give
yourself or your family.
It is the most complete
and accurate paraphrase
of the Bible ever published.
It is the most readable
and understandable
version of the Bible ever
published. It is the most
valuable gift you can give
yourself or your family.
It is the most complete
and accurate paraphrase
of the Bible ever published.
It is the most readable
and understandable
version of the Bible ever
published. It is the most
valuable gift you can give
yourself or your family.
It is the most complete
and accurate paraphrase
of the Bible ever published.
It is the most readable
and understandable
version of the Bible ever
published. It is the most
valuable gift you can give
yourself or your family.
It is the most complete
and accurate paraphrase
of the Bible ever published.
It is the most readable
and understandable
version of the Bible ever
published. It is the most
valuable gift you can give
yourself or your family.
It is the most complete
and accurate paraphrase
of the Bible ever published.
It is the most readable
and understandable
version of the Bible ever
published. It is the most
valuable gift you can give
yourself or your family.
It is the most complete
and accurate paraphrase
of the Bible ever published.
It is the most readable
and understandable
version of the Bible ever
published. It is the most
valuable gift you can give
yourself or your family.
It is the most complete
and accurate paraphrase
of the Bible ever published.
It is the most readable
and understandable
version of the Bible ever
published. It is the most
valuable gift you can give
yourself or your family.
It is the most complete
and accurate paraphrase
of the Bible ever published.
It is the most readable
and understandable
version of the Bible ever
published. It is the most
valuable gift you can give
yourself or your family.
It is the most complete
and accurate paraphrase
of the Bible ever published.
It is the most readable
and understandable
version of the Bible ever
published. It is the most
valuable gift you can give
yourself or your family.
It is the most complete
and accurate paraphrase
of the Bible ever published.
It is the most readable
and understandable
version of the Bible ever
published. It is the most
valuable gift you can give
yourself or your family.
It is the most complete
and accurate paraphrase
of the Bible ever published.
It is the most readable
and understandable
version of the Bible ever
published. It is the

Prep Sports Chiefs Wonder What's In Store For State Association

What's in store for the Michigan High School Athletic Association, the longtime governing body of prep sports in the state?

What's the future of the State Association's Representative Council, currently headed by Jack Cotton, athletic director for Farmington schools?

For more than 45 years, there never was much question the MHSAA dictated the ruled over schoolboy sports.

THERE NEVER WERE any serious objections raised to various decisions rendered by the association, whether it dealt with a player's eligibility

or how the state basketball tournament was conducted. Generally speaking, what the association did was appreciated. It was contended that without such an iron hand prep sports in Michigan never would have attained the heights and importance it has.

Of late, there has come an opinion that legally the State Association could not rule on eligibility cases and that something has to be done. Steps have been instituted to set up a state director who is responsible to the State Board of Education and could determine on eligibility cases and the like.

The State Prep Association would continue on a stripped-down basis and would run various tournaments, etc.

Veteran schoolmen are against any change. Some feel that "we're leading to a political football for prep sports."

In Lansing, however, state officials have contended "this is the only way we can beat the law. If we continue to operate

without the change, we'll get knocked around on every eligibility matter if it winds up in a court."

HEARINGS ON the proposed setup are to be held around the state. One is scheduled Monday night at the offices of the Detroit Board of Education. A second is listed Wednesday at 7:30 p.m. in the Stevenson building, 10100 Grand River in Detroit.

In the meantime, State Senator John Toepp of Cadillac has come forth, demanding that Michigan Attorney General Frank J. Kelley issue a formal ruling by Nov. 1, defining the legal state of the Michigan High School Athletic Association.

According to the state board of education, the proposed changes must be made because of what the attorney general has decreed.

TOEPP WANTS four questions answered:

1 - The current legal status of the MHSAA.

2 - The authority the MHSAA has over interscholastic athletic activities within the state, from eligibility matters to conducting tournaments.

3 - Will the MHSAA still be able to run state tournaments and rule on eligibility cases if it's determined the State Superintendent of Public Instruction has final authority on such questions and the superintendent delegates the responsibility to the MHSAA?

4 - Whether the attorney general could represent the MHSAA in a court of law.

Area Schools Eye New Loops

A new league comprising Farmington and Livonia schools?

It's been discussed quietly, the Observer newspapers have learned.

Just how soon it would become a reality isn't certain, but what is known is that there is a shuffling of leagues already in the works.

IN THE PAST year:

1 - Northville left the Wayne-Oakland League and joined the new Western Six that now includes Farmington Harrison and Livonia Churchill and also will include the new Canton Center High

scheduled to open next fall.

2 - The Suburban Six League with such schools as Livonia Bentley, Plymouth and Redford Union expanded from six to eight schools, adding two Dearborn schools.

3 - Birmingham Groves has announced it will leave the Northwest Suburban League at the close of the present year.

4 - Southfield Lathrup after a short existence in the Inter-Lakes League also is pulling up stakes.

5 - Both Groves and Lathrup are heading for a new Metro-Suburban League which will be comprised of

schools in their immediate areas.

6 - Garden City East will quit the Mid-Wayne League after the current year and join the Northwest Suburban League.

According to a report, North Farmington is one school which would like to find a league attachment that would give the Raiders more schools in their immediate area.

THE RAIDERS ARE in the Northwest Suburban League and with the departure of Birmingham Groves, they have only Oak Park and Livonia Franklin close by. John Glenn, Thurston and Garden City East all are what

might be called "a long ways away."

What about Livonia Bentley, which must go way down to Allen Park and Trenton when there are several schools closer at hand and might produce better rivalries with increases in gate receipts?

Talk remains on the quiet side.

One spokesman said: "Maybe we'll come up with a couple of eight-team leagues in the area. It could be good for all of us."

"After all, the closer your opponents are, the better chance you have of drawing bigger crowds. To have leagues comprised of schools

spread out doesn't make sense now days with so many schools so close to each other."

It doesn't make sense now days with so many schools so close to each other."

There have been some suggestions that all the four Livonia high schools should play in the same league. At the present, they are members of four different leagues.

The same holds true for the three Farmington schools. They're in different leagues. It's no different in Redford Township, in Birmingham, in Southfield or Garden City.

One of these days, such barriers might be broken.



SPECTACULAR LEAPING catch of a high pass is made by Franklin's Guy Burke (22) despite the efforts of two Annapolis defenders to block the aerial. Franklin crushed its nearby neighbor. (Observer photo by Harry Mauthe)

Southfield Starts Work On Baseball Diamonds

Baseball season may be over but not for those connected with keeping diamonds in Southfield.

A massive renovation program has been started to improve many of the city's 60 diamonds.

City recreation director Larry Schenk is supervising the program which will involve 15-20 diamonds.

"THOSE FIELDS just haven't met recreation standards and we want them to by the time the 1972 season rolls around," Schenk said.

Work will be done on city park and elementary school fields in cooperation with the schools, Schenk said.

The city also is examining unused land on the Civic Center complex to accommodate nine tennis, three hand ball-squash and eight shuffleboard boards. All would be lighted, fenced and landscaped.

The Southfield city complex now rates with the finest in the state for sports. Besides many outstanding diamonds for baseball and softball, it includes a hockey arena, a golf course which will be opened next spring and a swimming pool.

Spartans Win Second In League

Stevenson High harriers recorded their second straight Inter-Lakes Conference victory, downing Farmington, 21-34, in a dual meet in Cass Benton Park.

The Schoolcraft College invitational champions swept seven of the first 10 places, including first, second and third.

Dave Mathia was the individual winner with a clocking of 12:56 for the two and a half miles.

Pat Opsommer and Bill Walker took second and third for the Spartans before Milan Fedraw became the first Farmington finisher in fourth place.

He was followed by Kevin Rylance and Jim Mitchell with Kevin Maly and Paul Walcheski taking seventh and eighth for Stevenson.

Franklin Tops North

Paced by John Dawe, who bettered his own course record in winning, Franklin High rolled to its third straight cross country victory, downing North Farmington, 17-44.

It was the second Northwest Suburban League triumph and found the Patriots taking seven of the first 10 places.

Dawe was timed in 13:01, cracking his own record of 13:02.

Wayne Griffin, of Franklin, was second with Bob Stewart third ahead of Dale Carruthers, first Raider to finish.

Hazel Park Slates Day For Families

Saturday is Family Day at the Hazel Park Race Track. Children under 12 years of age will be admitted free on Saturdays, if accompanied by their parents. They will be admitted at the north gate. The boys and girls will be guests of the track in a special section of the grandstand.

This is a convenience for parents, who would like to enjoy the afternoon at the races but cannot get suitable baby sitters.

Every Thursday is Ladies Day sustaining a long and gracious tradition. Ladies are admitted to the grandstand on

Observerland Schools Rate High In Rankings

Six Observerland teams landed spots in the first Detroit News area high school football ratings.

Three teams each were ranked among the Top Ten in the North and West Divisions.

In the North, Brother Rice was placed second, North Farmington fourth and Southfield Lathrup eighth. Each

Borgess Wins 23d In Row

Bishop Borgess, defending Catholic League champion, is fast showing that it will be the team to beat in the cross country competition again this fall.

Borgess registered a pair of victories during the week to run its string of victories to 23 over a period of three years including four this season, three in league competition.

Borgess measured Aquinas earlier in the week, 15-50, sweeping the first 10 places. Jim Bearden was the individual leader with a time of 12:32.3, beating Dan Madden to the wire by seven seconds.

It was much the same story Thursday when Borgess measured St. Alphonsus, 15-50. The only difference was that it won the first nine places this time.

Madden finished first in 12:11.3, his best time ever, and Bearden was second in 12:19.9, also his fastest clocking.

team had 2-0 records entering the weekend play.

Hazel Park, also 2-0, was placed No. 1 in the North.

IN THE WEST, Fordson was named at the head of the list with Redford Union, Thurston and Plymouth in sixth, seventh and eighth spots, respectively.

The News also ranked Brother Rice seventh and North Farmington 10th in its first statewide ratings.

The Free Press listed North Farmington ninth in its state ratings. North Farmington

reigned as the state Class A champions in most the polls last year.

As little as \$120.40 per month TO OWN A LUXURY APARTMENT CONDOMINIUM

Monthly payments at 7 1/2 % with 20% down. Includes principal and interest. \$1,440.00 yearly payment does not include taxes or association assessments.

Exclusive Versailles Place

Apartment Condominiums in Farmington

CALL NOW: 477-7887 or 352-3228

WATCH WHAT'S GOING TO HAPPEN TO OUR SECOND FLOOR DO-IT-YOURSELF WINE CELLAR!

(See Our Ad in the Observer next week!)

American HARDWARE & SUPPLY CO.

31246 Eight Mile Road at Westland in Westland 478-8248

GET YOUR HOME READY FOR WINTER with

ALUMINUM SIDING TRIM FOR BRICK HOMES SPECIAL SALE PRICE

- Now everyone can afford to fix up their house.
- We've reduced our prices incredibly low.

WE DO ALL TRIM • ROOFS • GUTTERS • AWNINGS PORCH ENCLOSURES • STORM DOORS & WINDOWS

Average House 30'x40'x8'
Price includes materials and labor. Gables and trim extra. Larger houses accordingly. Don't paint your house this summer, throw away those paint brushes and save.

\$1,125

Regularity \$1,500 - SPECIAL PRICE

Featuring

Alco's 'Premium 30'

Permanently Bonded with

DuPont TEDLAR®

- Free Estimates
- No Payments 'til June 1972

Call Today: 537-5110

CENTENNIAL BUILDERS

Specialists in Aluminum Siding & Trim
24834 Five Mile Detroit, Mich.

RUSS STONIER, INC.

shelfmaster®

DESIGNER

Will give your Walls a Bold New Look!

Shelf-Master Designer Shelves and accessories are gracefully sculptured of fine, furniture grade, selected hardwoods.

Available unfinished or prefinished in Distressed Walnut

- VERSATILE!
- ADJUSTABLE!
- EASY TO INSTALL!

Choose from a selection wide and varied enough to harmonize with any decor... from Classic to Contemporary. Shelves, standards and brackets available pre-finished in popular medium and dark woodtone shades, or ready-to-finish yourself. Fine-grained, smooth-sanded hardwoods take beautiful stain or paint.

BANKAMERICARD • MASTER CHARGE

Home of Old Fashioned Service

30650 PLYMOUTH ROAD

SALEM LUMBER CENTER

NEW HUDSON FENCE CO., INC.

FENCING

- RAIL • REDWOOD
- RANCH • STOCKADE
- CHAIN LINK

FREE EST. 437-2074 FREE DEL.

THE BEDSPREAD PLACE

FACTORY OUTLET

40% TO 70% SAVINGS

FACTORY OVERSEEN QUAL SUPPLIES SPREADS

STAINLESS STEELWARE

NOW OPEN

SUNDAY 12 NOON-5 p.m.

270 PARK PLACE • NORTHVILLE

Across from the Water Wheel at the Ford Plant

9:30-5:30 Mon. thru Sat.

238-2000

OPEN

SUNDAY 10 a.m. - 4 p.m.

Saturday 8 a.m. - 5 p.m.

Mon. - Tues. - Wed.

9 a.m. - 6 p.m.

Thurs. - Fri.

9 - 8

The OBSERVER REAL ESTATE MART

THE MOST COMPLETE USED & NEW HOME LISTINGS PUBLISHED TWICE WEEKLY IN OBSERVERLAND

1-1 Homes For Sale

YOURS AT LAST

Look no further this 1968 model, 3 bedroom Colonial with 1 1/2 bath, formal dining room, large kitchen with built-in and dishwasher, large family room with brick wall fireplace. Basement and 3 1/2 car attached garage can be yours for only \$69,900.

BEL-MEN 522-3010

NORTHVILLE Edenderry Hills, executive 16 room home, 4 bedrooms, 2 1/2 bath, 1 1/2 car garage, 1/2 acre lot, \$89,900. 525-8822

TRI-LEVEL

Big 4 bedroom face brick beauty. Better than new condition. Extra large kitchen, 2 bedrooms, 23x13-foot family room, 2 1/2 car garage. \$33,900.

HARRISON-MOORE 427-9030

WESTLAND: 3 bedroom ranch, 1 1/2 baths, family room, fireplace, attached garage and porch, \$39,900. 428-4776

LIVONIA

"EXCELLENT ASSUMPTION"

Is one of the features of this 3 bedroom bi-level home, with family room, 1 1/2 baths, beautiful carpeting, 2 car garage, completely fenced lot, priced to go at \$26,800.

HARRY S. WOLFE

46 Years of Dependable Service

33236 Seven Mile

32398 Five Mile

GA 7-0733 421-5660

THREE bedroom home, by owner, face brick front, newly painted clean, new furnace, Redford. 522-5197

LOOKING FOR A GOOD ASSUMPTION AND QUICK OCCUPANCY IN GOOD LIVONIA LOCATION

Check this 3 bedroom brick ranch with full basement, 1 1/2 baths, kitchen built-in including dishwasher and refrigerator. 10 ft. door-walk to 12x15 deck. Washer-dryer, carpeting, drapes also included. Realistically priced at \$31,500.

MR. HAMILTON

HARTFORD 261-2000

SOUTHFIELD: Aluminum sided, 3 bedroom bungalow, 1 1/2 baths, 1/2 acre. \$29,900. 221-6-0888

SOUTH REDFORD

North off West Chicago between Inkster R. Beach-Daly. Lovely sprawling ranch home on large lot in South Redford. 2 bedrooms, formal dining room, family room with fireplace and 2 1/2 car attached garage. Lots of living area. \$28,500.

Jewel

15621 Farmington Rd., Livonia

261-7740

BRIGHTON

3 bedroom brick ranch, 1 1/2 baths, family room with fireplace. Carpeted throughout, 2 car attached garage, full basement. 1/2 acre lot, low taxes. \$38,900. 1-255-8771

OPEN SUN. 2-5

Redford Twp. Only \$21,800 for brick 3 bedroom home with carpeting, rec room, and large kitchen. Directions: 2613 Indian E. of Inkster Rd. 421-2100

IT'S BEAUTIFUL

This lovely modern 3 bedroom brick ranch with family room and attached 2 car garage. Modern kitchen, 1 1/2 baths and basement. 60'x30' lot. Good area. \$38,900.

421-2100

c.w. allen

Realtor

15337 Farmington Rd., Livonia

The Full Service Realtors

"HOMES AT YOUR PRICE"

\$25,900—Buys this spic and span 4-bedroom home, family size kitchen, gas heat, 2-car garage. Just down the street to grade school.

\$31,900—Buys this all brick story and one half, 3 bedrooms, full basement with paneled recreation room, 2-car garage, large treed lot, fenced yard with patio.

\$33,900—Buys this duplex. Want to retire, want free rent for yourself, and the income from the other unit to pay the expenses? Each unit has 2 bedrooms, and trouble free aluminum siding.

\$36,900—Buys your choice of a ranch or Cape Cod, both in ideal locations, large wooded lots, 3 bedrooms, full basements with recreation rooms, garages.

WE HAVE OTHER CHOICE BUYS TO \$144,000

Phone 453-7733 'til 9 p.m.

TOM NOTEBAERT REAL ESTATE

1205 S. Main St., Plymouth

1-1 Homes For Sale

HURRY-HURRY-HURRY

TAYLOR 3 bedroom, family room, 2 car attached garage. Extra large lot. \$39,900. 291-1948

9 ACRES

9 acres, 4 bedrooms, fireplace, formal dining room. Only 2 years old. Excellent spot for children. South Lyon schools.

JOHN PIERSON ASSOC. OR ROBT. H. THORNTON

REALTOR CHELSEA 475-8629 475-8857 OR EVENINGS 475-2064

FARMINGTON:

3 bedrooms, brick, attached 2 car garage. Large lot. Large kitchen fireplace. 1 1/2 baths. Carpeted throughout. Bee room. Can assume 6 1/2 mortgage. 477-7857

NOVI, 48071

Morningside. See-ride with Owners home ready, 3-bedroom brick ranch, large lot, fireplace in living room, separate dining room, utilities, appliances included, 1 1/2 baths. Quick occupancy. \$38,900.

PLYMOUTH Township, 6804

Marion. Sharp 3-bedroom aluminum-sided ranch. Large family room with fireplace, 1 1/2 car garage. \$35,900.

NORTHVILLE Township, 4808

Ridge Court. Over 1/2 acre with new 3-bedroom tri-level home. Lots of storage, natural fireplace, carpeted kitchen and family room, 3-car attached garage with breezeway. \$38,900.

FARMINGTON, 3804

GREY-THORNE 4 bedroom brick and aluminum ranch with fireplace, dining room and dinette, 2 1/2 baths, 2 car garage, nice lot in basement, 3 car attached garage, walking distance to all schools. Quick occupancy. \$27,900. Owner transferred. Bring all offers.

CUTLER

Realty

349-4030

REDFORD TWP.

By owner, 2 large bedroom brick ranch, 2 car attached garage, 1 1/2 baths, ceramic tile shower, custom drapes, carpeting, wet plaster, marble, central air, dishwasher, stove, gas central air, underground sprinkling system, maintenance free, excellent condition, many other extras. \$41,200. 264-4946

6 MILE-GRAND RIVER AREA

A lovely 3 bedroom aluminum sided home with full finished basement. 2 full baths, fully carpeted, formal dining room. Built-in dishwasher, lots of storage space, 2 1/2 car garage. Closed in front porch on fenced lot. Only \$21,400. Call

Jewel

15621 Farmington Rd., Livonia

261-7740

BRICK RANCH

Super sharp 3 bedroom brick ranch offers large living and dining area. Brick patio, 2 1/2 car garage and all built-in appliances. Close to schools. \$26,900

ASTA

"Home of the Professionals"

522-3550

PLYMOUTH HOMES

POPULAR WOODBROOK SUB. TOWNSHIP—Beautifully landscaped 2-year-old Colonial offering 4 bedrooms, 2 1/2 baths, formal dining room, family room with fireplace, 1st floor laundry and full basement. Close to schools and shopping. Asking \$63,900.

OPEN HOUSE SUNDAY 2-TO 5 P.M.

South of Ann Arbor Rd., north of Joy Rd. 9315 HIX ROAD

Sharp new tri-level with 3 bedrooms, 2 full baths, formal dining area, paneled family room with natural fireplace. Stainless steel built-in appliances, oversized attached 2-car garage and a 1/2 acre wooded setting. Asking \$41,900!

NORTHVILLE—Authentically designed Cape Cod

with a beautiful setting in the finest surroundings with 4 bedrooms, 2 baths, formal dining room, family room with fireplace, recreation room, and 1st floor laundry. Asking \$73,900!

453-8200

ROBERT BAKE, Realtors

1005 W. Ann Arbor Trail Plymouth

ROLING MERRIMAN

REALTOR

1176 S. MAIN PLYMOUTH

"the professional people"

OPEN HOUSE SUNDAY 1 to 4

West of Plymouth. 5651 Plymouth Rd. Country living on this large treed lot, 2 bedrooms with space for more. Formal dining, new kitchen. \$22,900

MOVE IN IMMEDIATELY—4 bedrooms, family room

fireplace, formal dining, carpeted. Terrific location in PLYMOUTH. Only \$29,000.

SMART 3-BEDROOM brick ranch in PLYMOUTH.

Built-in kitchen, full basement, 2 1/2-car garage, central air, heated in-ground pool. \$31,500.

CONVENIENT CITY OF PLYMOUTH location, double lot

with trees. 3 bedrooms with space for more. New country kitchen complete with built-ins, full basement, pool, too! Asking \$33,900.

LAKEPOINTE VILLAGE—Extra sharp 4-bedroom Colonial

with 2 1/2 baths, family room, enclosed porch, 2 fireplaces. MUST SEE—OWNER TRANSFERRED.

• MULTI-LIST MEMBERS • OPEN 7 DAYS

453-6800

1-1 Homes For Sale

FAMILY ROOM WITH FIREPLACE

Many hours of pleasurable Livonia living in this 3 bedroom brick tri-level. Close to shopping. Take a look at this one. Priced right. \$32,750.

CALL VINCENT LEE HARTFORD KE 7-6808

REDFORD TOWNSHIP

3 bedroom brick, full basement, 2 baths, 2 1/2 car garage. Owner: 525-8255

LIVONIA

"EXECUTIVE COLONIAL"

Watch the golfers from this 4 king size bedroom home, large foyer entrance, truly formal dining room, large wavy kitchen, family room and fireplace. Bay window living room, 1st floor laundry, 2 1/2 baths, full basement, 15 foot patio, attached 2 car garage, all on a cyclone fenced lot, excellent occupancy. \$46,900

HARRY S. WOLFE

46 Years of Dependable Service

33236 Seven Mile

32398 Five Mile

GA 7-0733 421-5660

BRICK RANCH, exterior only

completed. Utilities in. Lot 100 x 170. Farmington Twp. \$18,900. 476-7705

FAMILY ROOM

is just one of the many features in this super sharp 3 bedroom face brick ranch. Basement recreation room, Florida room, thermopane windows throughout, 2 car attached garage. Located in one Livonia's newest subdivisions. \$37,500.

HARRISON-MOORE 427-9030

REDFORD—Sharp 2 bedrooms,

large kitchen and living room, carpeted. Basement, 2 car garage. On part. Garage. Owner. 525-1912

OPEN SUN. 2-5

GARDEN CITY

30221 WINDSOR, W. of Middlebelt, S. of Warren. 3 bedroom face brick ranch with a full finished basement, forced air gas heat, recreation room with a wet bar, fireplace, home also includes 1 1/2 baths, wet plaster, fenced yard, close to schools, shopping and transportation. Only \$25,900 FHA. See for yourself.

ASTA

"Home of the Professionals"

522-3550

PLYMOUTH HOMES

POPULAR WOODBROOK SUB. TOWNSHIP—Beautifully landscaped 2-year-old Colonial offering 4 bedrooms, 2 1/2 baths, formal dining room, family room with fireplace, 1st floor laundry and full basement. Close to schools and shopping. Asking \$63,900.

OPEN HOUSE SUNDAY 2-TO 5 P.M.

South of Ann Arbor Rd., north of Joy Rd. 9315 HIX ROAD

Sharp new tri-level with 3 bedrooms, 2 full baths, formal dining area, paneled family room with natural fireplace. Stainless steel built-in appliances, oversized attached 2-car garage and a 1/2 acre wooded setting. Asking \$41,900!

NORTHVILLE—Authentically designed Cape Cod

with a beautiful setting in the finest surroundings with 4 bedrooms, 2 baths, formal dining room, family room with fireplace, recreation room, and 1st floor laundry. Asking \$73,900!

453-8200

ROBERT BAKE, Realtors

1005 W. Ann Arbor Trail Plymouth

ROLING MERRIMAN

REALTOR

1176 S. MAIN PLYMOUTH

"the professional people"

OPEN HOUSE SUNDAY 1 to 4

West of Plymouth. 5651 Plymouth Rd. Country living on this large treed lot, 2 bedrooms with space for more. Formal dining, new kitchen. \$22,900

MOVE IN IMMEDIATELY—4 bedrooms, family room

fireplace, formal dining, carpeted. Terrific location in PLYMOUTH. Only \$29,000.

SMART 3-BEDROOM brick ranch in PLYMOUTH.

Built-in kitchen, full basement, 2 1/2-car garage, central air, heated in-ground pool. \$31,500.

CONVENIENT CITY OF PLYMOUTH location, double lot

with trees. 3 bedrooms with space for more. New country kitchen complete with built-ins, full basement, pool, too! Asking \$33,900.

LAKEPOINTE VILLAGE—Extra sharp 4-bedroom Colonial

with 2 1/2 baths, family room, enclosed porch, 2 fireplaces. MUST SEE—OWNER TRANSFERRED.

• MULTI-LIST MEMBERS • OPEN 7 DAYS

453-6800

1-1 Homes For Sale

GRAYLAND. Older home, 4 bed-

rooms, recently remodeled inside. Great recreation area. \$29,900 cash. Gas heat. Wm. Oldham, Box 22-5, Grayling, Mich. 49635

GARDEN CITY

We invite you to compare what we have to offer, and you'll agree that this 3-bedroom, 1 bath, ranch offers more luxury and comfort at a price you can easily afford.

Home includes a huge antiqued birchwood paneled kitchen and dining area, carpeting in living room and the kitchen, swimming pool and much, much more! Call today at 453-4840.

WESTLAND

See this beautiful 3-bedroom, brick ranch located at 36644 Melton Avenue. Home has fenced in lot, 2 1/2 car garage, and full basement. All this situated on a 1,400 sq. ft. lot! Call today at 453-4840.

GEORGE SMITH REAL ESTATE

702 S. Main, Plymouth

453-4840

OPEN 5-5 P.M. Livonia, 1887

Flamingo, 3 bedroom brick, 1 1/2 baths, carpet, drapes, appliances, basement, newly decorated. \$27,900. 477-1135

OPEN SUNDAY 2-5 P.M.

6104 BERWYN

DEARBORN HEIGHTS. Finest three-bedroom ranch with dining room, finished basement, central air and two-car garage. \$31,900.

7518 HAWTHORNE

IN WESTLAND sits this sharp three-bedroom ranch, 1 1/2 baths, new carpeting, heated in-ground pool, for only \$29,900, with assumable mortgage.

REDFORD. Four-bedroom aluminum bungalow

with two-car garage and all appliances. Easy terms.

REDFORD. An executive-built three-bedroom brick ranch

with marble foyer, music room, family room, three fireplaces, finished basement, attached garage. Next to exclusive country club. \$72,900.

WESTLAND. 3 bedroom ranch,

large living room and kitchen. 1 1/2 car garage. Assume 9% land contract with \$8,000 down, balance of \$15,700. \$29,900. 753-2694

LIVONIA

BRICK RANCH

Super sharp 3 bedroom brick ranch offers large living and dining area. Brick patio, 2 1/2 car garage and all built-in appliances. Close to schools. \$26,900

JOHN H. HUSSEY Co.

11688 Farmington Rd. 525-6000

PLYMOUTH COLONIAL

Four bedroom contemporary with attached 2 1/2 car garage, full basement, large family room with fireplace, much more immediate occupancy. \$39,900. Call 261-6300 for appointment.

chamberlain

Plymouth Rd., W. of Wayne Rd.

3 BEDROOM RANCH, corner lot near Livonia Mall. Full basement and garage. VE 8-5395

WAYNE

STARTER HOME

Would you believe we can offer you a 3-bedroom brick ranch with a modern kitchen, a full basement finished, a 2 1/2 car garage, and immediate occupancy for only \$19,900.

HARRY S. WOLFE

46 Years of Dependable Service

32398 Five Mile

33236 Seven Mile

421-5660 GA 7-0733

BY OWNER. Northwest Detroit:

3 bedroom brick ranch, 2 car attached garage, 2 fireplaces, 1 1/2 baths, country kitchen, sun porch, many extras. 477-9008

COVENTRY GARDENS

Nestled among the trees on ravine lot, this 3-bedroom ranch features natural fireplace, 2 baths, finished recreation room and formal dining, 2-car garage. Call for appointment today, only \$33,900.

The OBSERVER REAL ESTATE MART

THE MOST COMPLETE USED & NEW HOME LISTINGS PUBLISHED TWICE WEEKLY IN OBSERVERLAND

1-1 Homes For Sale

LIVONIA
Immediate Occupancy
Builder's close-out. 2 model ranch homes. Fully landscaped with sprinkling system, carpeted, drapes, family room with fireplace, 3 bedrooms, 1 1/2 baths, basement, attached 2 car garage, and many other features.
After 1:00 P.M.—425-8840

BINDER & LARK
6 Mile & Levan

1-1 Homes For Sale

OPEN SUNDAY 2-5
LIVONIA, 32139 Barkley, custom ranch 3 bedroom brick home with 1 1/2 bath, den with door wall to patio, large kitchen with built-ins. Wet plaster, carpeting and drapes. Close to schools and park recreation area. \$33,000. 557-6700.

chamberlain
Southfield at 11 Mile Rd.

1-1 Homes For Sale

LIVONIA
MODERN RANCH
This attractive grey brick 3-bedroom ranch has a large family-style kitchen with granite and door wall to patio, a full basement roughed in for paneling and an attached garage on a large lot. \$27,900.
HARRY S. WOLFE
46 Years of Dependable Service
32398 Five Mile
33236 Seve Mile
421-5660 GA 7-0733

15 MINUTES FROM FARMINGTON
Come to see this large 4-bedroom home in one of the Township's most desirable areas. Home features 1 1/2 baths, country kitchen, paneled family room, formal carpeted living room, 2 1/2-car attached garage. All this on 1/2 acre. \$31,000.

HILL-N-DALE
3-bedroom home has 1 1/2 baths, fireplace in large family room, full basement, attached 2-car garage, paved street. And privileges on private lake. This sharp home is in an exclusive area. \$44,000

DESIRABLE
Very sharp 2-bedroom home, marble fireplace, lovely family room, parquet floors, brick barbecue, 2 1/2-car garage. Situated on over a 1/2 acre with many, many trees. \$28,800.

NEIBAUER REALTY
1374 W. Maple Road
Walled Lake 1-624-3015

INVESTOR — Sharp 3 bedroom ranch, finished basement, patio, garage, close to schools. Owner must sell. \$18,000 for the GE buyer.

LEE
henkelman div. 476-6161

1-1 Homes For Sale

HILLS OF POWDER HORN
Stunning 3-bedroom home with temporary multi-level on superb high site. 4 bedrooms, huge master bedroom suite with balcony, library, 1/2 bath, huge fireplace family room, central air, sprinkler system. Mediterranean motif. Assumable mortgage. \$44,000.
SHUSTER, REALTORS
626-0400 444-5540

OPEN SUN. 2-5
LIVONIA-KIMBERLY OAKS
W. of Hubbard, N. of Lyndon. Immaculate four-bedroom split level, family kitchen, formal dining, 3 1/2 baths, family room with fireplace, sunken patio. \$38,500.

255-3070

Colony Park
13 Mile & Farmington Roads. Quality built by Wolack. 4 bedroom. Colonial priced from day. 23.

Durbin Company
Realtor 851-1666

FOUR BEDROOMS
Spacious brick bungalow with 2 1/2-car garage. There's carpeting in living room, large kitchen, tiled basement, and fenced yard. Cherry Hill School District. Close to Saint Norbert's Parish. Only \$22,500 FHA terms.

WE BUY AND TRADE

JAY
425-1500

TRYING TO GET A START?
WELL HOW ABOUT THIS?
3 bedrooms, large living room, kitchen, dining combination, large utility room, large bedrooms, insulated windows, marble slabs, 10x10 tile lot with lake privileges. \$19,900.

NEW 3 bedroom ranch with walkout lower level, now under construction. Carpet, storm doors, gutters, brick and aluminum exterior, insulated windows, marble slabs, range and hood, deck and driveway off dining area. Full price \$34,900.

VERY SHARP Tri-level, 1,200 sq. ft. Carpet in living room, bedroom and hall, range and hood, insulated windows and screens. Includes garage and lot. \$26,100.

ENGLAND REALTY
3063 Union Lake Rd.
Union Lake 363-7117

SMALL MULTI SITE Inkster and Joy Rd. Excellent terms. See this. Call 228-2945 Brighton, Broker.

62 ACRES of vacant land in the heart of fast developing Canton Twp. Frontage on both Ford Rd. and Salt Rd. Just west of Canton Center Rd. Excellent terms on Land Contract. \$9 to \$25 down. Call 228-2945 Brighton, Broker.

BEAUTIFUL 1 1/2 story 4 bedroom home located on 4.5 acres of land in Farmington Twp. Frontage on both Ford Rd. and Salt Rd. Many other extras. Call 228-2945 Brighton, Broker.

LANDMARK
Realty
8045 Grand River, Brighton
(1/2 mile west of State Police Post)
1-229-2945

DEARBORN HEIGHTS area. St. Ann's Parish. 4 bedrooms ranch. 3 car garage. Finished basement. 2 fireplaces. In lovely wooded area. \$69,900. LO 1-4186

1-1 Homes For Sale

MILFORD
A few minutes from every type recreational activity. Fishing, swimming, snowmobiling, skiing, and hunting. This nice three-bedroom brick ranch on a large wooded fenced well-landscaped lot. Central air conditioning, full basement, water softener, drapes, and many other features. Can be yours for \$38,500.

SO. LYON
In beautiful Tanqueray Hills, a three-bedroom tri-level with 1 1/2 baths, beautiful family room, assumption of a 6 1/2 mortgage possible.

CALLAN
REAL ESTATE
620 N. Milford, Milford
1-684-1285 or 1-685-2236

SACRIFICE SALE
\$32,500

Livonia, prices reduced, white brick, 3 bedrooms, tri-level, carpeting, drapes, formal dining room, 24 ft. family room with fireplace, pool, 2 car garage, dishwasher, disposal, music speaker system, professionally landscaped, gas lantern and grill, close to schools, churches, 3254 Washington.

422-8156

SOUTH LYON
8 Mile Rd.-Pontiac Tr.
Northwest Corner

Country home. All modern, 1 1/2 acres. Plus 30x40 recreational building. Pool table, bar, bath, etc. Priced to sell on terms. By owner. Call 437-2734 437-0063

OPEN SUN. 1-5 P.M.
New custom 4 bedroom tri-level on 1/2 acre lot, offered at \$89,900.

FRED S. WILSON BLDG. CO.
Model at
2201 Washington Drive off West 9 Mile Road, 2 miles West of Farmington Road.

531-5237

GARDEN CITY
Large 3 bedroom face brick ranch, 1 1/2 acres lot in heart of city. 2 car attached garage, full basement, many extras. You must see this one! \$38,900.

3 bedroom face brick ranch on large lot, 2 car garage, full basement, covered patio, rec room in basement. Immediate occupancy. \$29,900.

DEARBORN HEIGHTS
3 bedroom center block home, sharp and clean, ceramic tiled bath, 2 car garage, priced to sell \$19,900.

TAYLOR
40 Down! 1 bedroom 1 1/2 story, carpeting, located on large lot, full price only \$15,900.

LIVONIA
1 1/2 story living room, carpeting, separate dining, brick wall and field stone fireplace, in living room 2 1/2 car garage, in-ground swimming pool, nice quiet area. \$23,900.

JASTER
REAL ESTATE
522-1500

31290 Plymouth Rd., Livonia

QUICK POSSESSION
Neat brick home on nicely landscaped lot, 3 bedroom, finished basement with 4th bedroom or office, 2 car garage, good location. A good buy at \$29,900.

COUNTRY LIVING
3 bedroom brick, family room, finished basement, attached double garage, well located, 1/4 acre plot. Plymouth schools, \$36,900.

SWAIN
Realty
865 South Main, Plymouth
453-7650

WESTLAND
Immediate Occupancy
4 bedroom, bi-level with family room and 2 1/2 car brick-front garage. Fenced. \$29,900

Jewel
15621 Farmington Rd.
Livonia 261-7740

1-1 Homes For Sale

FARMINGTON — \$42,800
Maplenut and Farmington Road

IMPRESSIVE 4 bedroom, 2 1/2 bath split level, 5th bedroom or den, sun deck off master bedroom. Labor-saving kitchen built-ins, 2-way (natural) fireplace in family room. Immediate occupancy. Call 476-8700.

Independence Commons \$69,900
Drake and 11 Mile Roads

STATELY 4 bedroom, 2 1/2 bath quad level, central air conditioning, carpeting throughout, custom drapes, kitchen built-ins and deluxe cabinets, finished basement with built-in bookcases, professionally landscaped, private 21 acre subdivision park. Call 476-8700.

SOUTHFIELD — \$44,900
Maplewood and Rougewood

ATTRACTIVE 3 bedroom, 1 1/2 bath ranch, wet plaster, abundant closets, modern kitchen, living room fireplace, barbecue grill in family room, landscaped wooded acre with above ground swimming pool. Call 476-8700.

THOMPSON-BROWN
Residential Resale Division

1-2 Condominiums For Sale

CONDOMINIUMS
BRIGHTON, MICHIGAN
Ayrshire Highland
5120 Brighton Rd.
opposite Burroughs Farms, 2 bedroom townhouses. Quality throughout. All deluxe appointments. Financing. Model open 10-8 p.m. Phone 227-6908

1-2 Co-ops
NORTHVILLE Co-op townhouse, 2 bedrooms, 1 1/2 baths. Appliances, carpeting, drapes, maintenance, gas water. \$25,000 down, \$237 month. 455-3782

1-3 Duplexes For Sale
BRICK duplex, City of Plymouth, 2 bedrooms each, air conditioning. \$45 No. Harvey. \$35,000. 453-0484

FARMINGTON RD. — Either or both units. Carpeting and appliances. 451-0031

1-4 Townhouses For Sale
NORTHVILLE Three bedroom, 1 1/2 bath, townhouse in lovely area. Pool, appliances, air conditioner. \$45 monthly payment includes gas and maintenance. Call after 1 p.m. 446-5572

THREE BEDROOMS, 1 1/2 baths, basement, air, carpeting, pool, maintenance, excellent schools. Contact after 5 p.m. beginning Sunday. 453-2045

1-5 Mobile Homes
14' WIDES
ON DISPLAY
COUNTRY ESTATES
Sales and Park
58220 W. 8 Mile Rd.
(6 Miles West of Northville)
437-2046

ACADEMY Mobile home, 1 year old, 10' x 12', 2 bedrooms, utility, kitchen, living room, dining room, 1 large bath, California sun room. Has all conveniences. Suburban Estates, 7 Maple Dr. on Lohr Rd., Belleville. 345-7987

LITTLE VALLEY TRAILER PARK
FARMINGTON AREA—12 New Mobile Homes on display. From \$8,180 and up. Lots available. **COTTAGE TRAILERS**, One and 2 bedrooms, \$1,995. SPECIAL 2 bedrooms, \$2,995. 2 bedrooms \$4,995.

DETROITER, 6x35, on lot, clean, very good condition, new carpeting, stove, furnace, full length awning. 476-7915

HOLLY PARK—12'x60'. Immaculate condition, 2 bedrooms, dining room, all appliances, excellent storage, built 1969, \$5,700.

Dibble Realty 453-1020

1-6 Resorts For Sale
TITTABAWASSEE RIVER, cottages, 3 bedrooms, 2 bathrooms, 7,000 cash, \$8,000 land contract. 308-4893

1-7 Lots & Acreage For Sale
TWO nice lots, in Carr, Michigan. 1/2 acre, 100x200, \$2,500 each, 1 mile from town. 352-3422

APPROX. 9 1/2 ACRES
282 ft. x 1500 ft. with brick house at 17834 Merriman, Livonia, zoned R.U.F. By owner, \$55,000. 6% first mortgage. 1-685-1280

FLORIDA, Citrus Springs lot. Purchased Mackie Bros. Private, must sell. Regular \$2,195, asking \$1,995. 308-5563

6 ACRES Jackson County. Pleasant Lake area. Corner Territorial and Cooper Rd. 617-704-0031

MILFORD Township, 12 acres, excellent building site, 757 road frontage across from state land, \$27,000, \$7,000 down. Call owner between 4 and 6 p.m. 685-1782

1 ACRE wooded lot, 120 x 332. Vicinity of Warren and Hix. Fly on a 1/2 School District. \$7,000. 453-4140

LIVONIA, 1 acre, 1 block E. of Merriman Rd., at 7 Mile Rd. 1/4 mile at N. end of Merriman Rd. 2 lots facing South, 81' x 200' each (surveyed) (sign on trees). 356-0725

1-7 Lots & Acreage For Sale

BUILDER WITH CASH PAYING TOP \$5 FOR VACANT LOTS. CALL MR. CHRIST NORWOOD 255-1700

TWO TO TEN ACRE VACANT PARCELS
Howell-Pineckey area. All rolling and wooded acreage. Some with pond site. New country estate development.

HOWELL TOWN AND COUNTRY
Pinckney, Michigan
878-3177
*PLEASE ASK FOR DICK MILLER

BEAUTIFUL 36 Acres, wild life preserve now divided in huge 9 acre lots. Woods, hills, quiet peaceful. Big waterfalls. For home or investment! Northeast side of Onslow Lake, south from M-58 on hilltop road, 3 miles west of Pontiac Airport. 1-388-3364

1-8 Lake Property
CROOKED LAKE, S. Lyon, 130'x150' lot overlooking Lake, \$7,500. 557-7941

TITTABAWASSEE RIVER, Over 160' of river frontage. Wooded, private. Land contract - OK. \$7,500. NE 1-5257

NORTHERN Property 160 acres overlooking Grand Traverse Bay. Black top road, lake frontage on 100 acre lake, hilly and wooded. Zoned residential. Excellent terms on land contract. Contact after 5 p.m. beginning Sunday. 453-2045

LAKE FRONT — Year round, 3 bedrooms, near Brighton on Islands Lake. Immediate possession. Just \$19,900.

LEE
henkelman div. 476-6161

5 ACRES, lake privileges, sewer, water, on Long Lake Rd. between Franklin, Westland, \$21,500. After 6 p.m. 686-0741

DUCK LAKE
Buy this beautiful lake-front lot in Axford Acres on South side of Duck Lake. Paved road to your front door in the finest recreational area in southeastern Michigan, 98 feet of frontage in an area where lots are much higher priced.

CALLAN
REAL ESTATE
620 N. Milford, Milford
1-684-1285 or 1-685-2236

1-9 Cemetery Lots
PARKVIEW Memorial Several lots for sale. Blocks C and E at \$50 each. Each lot is for 6 Burials. Prepared, R. Heck, 15500 Detroit Rd., Lansing Mich. 48906. Call between 6 p.m. and 8 p.m. 1-517-484-7983

OAKLAND HILL Memorial Park, 4 chapel graves to settle estate. Will divide. 722-6831

CHOICE cemetery lots, Reasonable. Last Supper section. Parkview Memorial Gardens. 278-6655

1-10 Farms For Sale
PRIVACY is yours on this scenic square 40 acres, 10' x 55' 3 bedroom trailer, N. of Howell in Byron school district. \$800 acre. Land contract. 477-0515, 534-7354

1-11 Commercial, Industrial
FORD RD., Westland, 7 acres. Commercial corner, zoned office. 455-9921

1-14 Real Estate Wanted
\$ Don't Call Me \$
unless you want more cash for your property or lot even if in need of repairs or in foreclosure. Call Mr. Christ NORWOOD 255-1700

WE WILL BUY your house for all cash now. Move later. No points or commission. Investor. Call 476-1435

CASH PAID for properties in Northwest suburbs. Highest cash offer. No commission. No points. Investor. 476-1435

QUICK CASH!
2 OR 3 BEDROOMS ANYWHERE ANY CONDITION
CALL
FRANK CHANDLER
427-5401

NO points, or commission. Top dollar for your home. And back. 477-1234

MORE CASH
INVESTMENT BUYERS!
CALL
MEL or KEN
427-5828

CALL us for top dollars even if behind in payments. Van \$295. 477-1234

INSTANT CASH—Even if in foreclosure we will pay all cash for your house. Will rent back to you. Investor. 476-1435

CASH!
CASH!
\$
All cash in 24 hours for your home or equity. No waiting, no delay. Call us and you will get more money.

ADVANCE
6876 MIDDLEBELT
GA 7-5400

1-14 Real Estate Wanted

E-Z OUT I BUY HOUSES
CALL ME
BOB BALLARD
HARTFORD 261-2000

ABSOLUTELY TOP PRICE
PAID FOR PROPERTY
Livonia, Farmington, Plymouth, Redford, Southfield. No Waiting! All your cash in two days! No points, commissions or options. Call today.

Myers-Hill KE 3-5310

LOT wanted for building a retirement home in Plymouth, Livonia area. Reasonable. VE 7-1016

INSTANT CASH
Regardless of the condition of your property.

Call
GROSSMAN
LIVONIA REALTY
27520 FIVE MILE
GA 7-3200

WANTED—Fairly new home up to 10 years old, Plymouth Twp., Northville, Novi area. From owner. 425-2452

PLYMOUTH LISTINGS WANTED
STEWART OLDFORD
Real Estate Since 1935
Plymouth 453-7660

RENTAL Building, Plumbing shop, beauty shop, barber shop, retail shop, and warehouse. \$89,000. J. L. Hudson Real Estate, 601 S. Lafayette, S. Lyon. 437-5953, 437-0630

100% SCHAEFER near 6 Mile, very nice apartment, all conveniences nearby, very reasonable. 453-0946

PLYMOUTH APT., \$125 month, 1 year lease. Carpeted, refrigerator, stove, air conditioning and heat. 453-0946

1-15 Business Opportunities
FULL TIME OR PART TIME
Couples or Individuals
Start your own career in a fast growing business. For splendid opportunity, phone 387-3752.

NEED 1030 C.J.S., metal cabinet-turn snow plow, many extras, 40 good accounts in Franklin. Best offer. 638-6688

MOBILE HOME PARK
Partners Wanted
Short-term or long-term \$2,500 required
Call 1-685-1280
Michigan residents only

MOBILE truck-washing business. Power washing unit and steam cleaner. Electric power plant and truck. Established accounts. Small investment. After 6 p.m. 455-0282

REAL ESTATE LOANS. Any amount, any purpose, anywhere. John Quinlan. 852-1725

2-1 Apartments For Rent
Westland Estates Apts.
6843 N. Wayne Rd.
Between Warren, Ford Rd. One bedroom, \$160. Swimming pool, community building, carpeted, drapes, appliances, garage, disposal, air conditioning, hot water, heat, one-year lease. No pets. Call 11 a.m.-7 p.m. 721-3600

AVON HOUSE
Nice 1 bedroom apartment, carpet, drapes, air conditioned, disposal, walk-in closets, TV monitored lobby, \$160 per month.
16840 Telegraph (near 6 Mile)

GRAND OPENING
PHASE #2
Be among the first to see these excellent floor plans.
1 BEDROOM
2 BEDROOMS
TOWNHOUSES
Carpeting, HOTPOINT appliances, heating, air conditioning, community building, swimming pool and security intercom are but a few of the unique features.
From \$175 month
MODELS OPEN DAILY 12-8
Drive out 5 Mile Rd. 1/2 mile West of Haggerty
Northville Twp. 455-1900

VILLAGE SQUIRE
FORD ROAD between Newburgh and Haggerty Roads
GRACIOUS COUNTRY LIVING
Close to Westland Shopping, Churches and Schools
One Bedroom \$164 Two Bedrooms \$189
Rentals Include:
Drapes
Carpeting
Central Heat
Swimming Pool
All utilities except Electricity
TOTAL SOUND PROOF AND FIRE PROOF
FURNISHED MODELS
OPEN DAILY
453-8773 358-5550

479 S. MAIN ST. PLYMOUTH 453-2210 PLYMOUTH

OPEN HOUSE 1:00-4:30
SUNDAY OCT. 3

SEE THIS EXCEPTIONAL 3-bedroom brick ranch with all new aluminum trim. One and one half baths, full finished basement, 2 1/2-car garage. Located in a quiet area north of Ann Arbor Trail, 1 block west of Inkster Road. 8661 Cardwell. \$32,500.

WEST OF NORTHVILLE — Three-bedroom brick and aluminum colonial on 2 acres. 2-car attached garage. 1 1/2 baths. Immediate occupancy. \$45,000.

TEN ACRES with 1,800 sq. ft. Brick Ranch, 3 bedrooms, full basement, family room with fireplace, 2 baths, 2-car attached garage, new barn. Close to US-23 and I-96. \$55,000.

ATTRACTIVE RANCH on nicely landscaped 3/4 acre in a beautiful rural setting, adjacent to golf course. Master bedroom with adjoining full bath, double closets, many other fine features. \$46,500.

WALK ANY PLACE in Plymouth from this attractive 2-bedroom home with bath and 1/2, full basement, large shady lot with garage. \$27,500.

"People With Purpose"

J. L. HUDSON Real Estate



OPEN SUNDAY 2-5 P.M.

</

James L. Smith

**ED'S
HOLSTERING**
FREE ESTIMATES
moved from
111 W. 8th St.
505-243-2141

**RE. 18 ft. van. Cut
and hauling costs in
r free estimate.**
484-3873

Services Wanted

Wade to Pontiac Motors.

Antiques For Sale

**MRS. Matching country-
ch plank seat. 340-2656**

**ROLL TOP DESK, 2
oak tables, 4 spindle
chairs. 463-4875**

ighth Annual
BLOOMFIELD
ANTIQUITY SHOW
OBER 5, 6 AND 7
DAILY 11 A.M.
TO 10 P.M.
DAY TO 6 P.M.

SS OF CHRIST
LUTHERAN
CHURCH
Pine and Telegraph
Roads

TRAIN, track, trans-
and accessories. Col-
item. Call after 12 noon.
bor, 971-2360

MARKET — Wonderl
Center. Saturd
9. For reservations call
422-7755 or 291-6722

and girl's regular 26"
and 20" bikes. 28855
alt, 1 block E. of Middle-
blocks N. of S Mile.

20 and 26 inch bike.
1 inch bike. KE 4-8212

GH 10-speed. Brand new.
5-7345.

RLS' bicycle, \$10. Call
474-2395

Boats and Motors

SE sailboat for sale, 1
1, fiberglass, with trailer,
without trailer \$525.
453-2045

N, 16 ft. tri hull, open
top, canvas, Mercury 200

ed June 1971, 98,500.
677-7387

This image shows a blank white page. On the right side, there are two parallel vertical black lines. A single small, dark, irregular speck is located in the upper-middle portion of the page. There is no text or other graphical content.

S

This image shows a blank white page. There are dark, irregular borders along the top, bottom, and right edges, which appear to be artifacts from scanning or the edge of the paper. No text or other markings are present on the page.

[illegible]

1

ds

[illegible]

(9 a.m.-12 Noon)

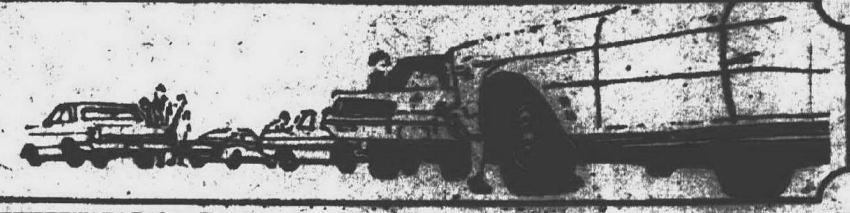
*observer
want ads*

8:30 a.m. to 5 p.m. Monday through Friday
9 a.m. to 12 noon Saturday



The AUTOMART

OVERLAND'S MOST COMPLETE SHOPPING GUIDE FOR
USED CARS • NEW CARS • TRUCKS



5-16 Misc. for Sale

RUMAGE SALE—Oct. 2, 10 a.m. to 4 p.m. Oct. 3, 10 a.m. to 4 p.m. between Grand River & 10 Mile. **KE 3-4822**

FENCE chain link, 27 ft. gate, 4 posts, top rail, bottom rail, 100 ft. **KE 3-4822**

GARAGE Sale, Mon. Tues. 10 a.m. to 4 p.m. 10 Mile & 11 Mile. **KE 3-4822**

ELECTRIC clothes dryer, 300 lbs. capacity, wood burning stove, miscellaneous furniture, dishes, 1960s. **KE 3-4822**

ANTIQUES, furniture, glassware, lamps, bottles, etc. **KE 3-4822**

YARD SALE, Sat. Sun. Oct. 2-3, 10 a.m. to 4 p.m. 10 Mile & 11 Mile. **KE 3-4822**

BOTPOINT electric steps, 300 lbs. capacity, wood burning stove, miscellaneous furniture, dishes, 1960s. **KE 3-4822**

BABIES jumper, bedroom lamps, jewelry, clothing, many other misc. and household items. **KE 3-4822**

7x10 STEEL SHED, has never been erected, 300 lbs. **KE 3-4822**

COMBINATION TV radio, record player, portable washing machine, Southern minivan, 2 burner hot plate, all in good condition. **KE 3-4822**

RUMAGE and Sale, Sat. Sun. Oct. 2-3, 10 a.m. to 4 p.m. 10 Mile & 11 Mile. **KE 3-4822**

SWIMMING POOL, 21-22 ft. diameter, 4 ft. deep, 100 lbs. **KE 3-4822**

SPINET PIANO, moveable, upright, 1960s, 100 lbs. **KE 3-4822**

CIRCLE Oct. 7, 8, 9 Big garage sale, 100 lbs. **KE 3-4822**

GARAGE SALE Dishwasher, like new, 100 lbs. **KE 3-4822**

BABY CRIB, complete, 100 lbs. **KE 3-4822**

BARBECUE and rotisserie, large range type, 100 lbs. **KE 3-4822**

GARAGE SALE Antiques, outdoor motor, 100 lbs. **KE 3-4822**

FIREPLACE Wood, well used, 100 lbs. **KE 3-4822**

GIANT Garage Sale, Sunday, Oct. 3, 10 a.m. to 4 p.m. **KE 3-4822**

KEIL automatic hay mowing, 100 lbs. **KE 3-4822**

TWO Bass guitar speaker system, excellent sound, 100 lbs. **KE 3-4822**

SCHRAMM 75 CFM Sashless air compressor, 100 lbs. **KE 3-4822**

GARAGE SALE Fri. Sat. Sun. 10 a.m. to 4 p.m. **KE 3-4822**

ELECTRIC stove, 100 lbs. **KE 3-4822**

NEIGHBORHOOD Garage Sale, Sat. Sun. 10 a.m. to 4 p.m. **KE 3-4822**

ELECTRIC stove, refrigerator, 100 lbs. **KE 3-4822**

CRASHMAN tools, new, 100 lbs. **KE 3-4822**

KEEP THE CARPET Cleaning problem, 100 lbs. **KE 3-4822**

HUNDREDS—Furniture, 100 lbs. **KE 3-4822**

WELL kept carpets show the results of regular Blue Luster spot cleaning, 100 lbs. **KE 3-4822**

OFF white French Provincial double bed and dresser, 100 lbs. **KE 3-4822**

ENCLOSURE Britannica, like new, 100 lbs. **KE 3-4822**

DOUGLAS pool, 12x6 ft., complete with winter cover, 100 lbs. **KE 3-4822**

WHITE 6 year crib, complete, good condition, 100 lbs. **KE 3-4822**

5-16 Misc. For Sale

WHEELBARROW TRACTOR, 10 hp. **KE 3-4822**

GARAGE SALE—6 families, children's clothes, 100 lbs. **KE 3-4822**

ANTIQUE gun cabinet, 100 lbs. **KE 3-4822**

SCRAFT Continental China, plate settings for 10, plus coffee pot, pitcher, 100 lbs. **KE 3-4822**

ORGAN and bench, 100 lbs. **KE 3-4822**

BABY CRI, complete, 100 lbs. **KE 3-4822**

GARAGE SALE, Sat. Sun. 10 a.m. to 4 p.m. **KE 3-4822**

OAK dining table, 100 lbs. **KE 3-4822**

MISC. girl's clothes, size 1-4, 100 lbs. **KE 3-4822**

OUR SCOUT or Webelos uniform, complete, 100 lbs. **KE 3-4822**

MASON JAMES, 100 regular quart size, 100 lbs. **KE 3-4822**

GARAGE SALE, bicycles, clothing, 100 lbs. **KE 3-4822**

POOL, 24 ft. x 48 inches, must sell, 100 lbs. **KE 3-4822**

GARAGE SALE, fantastic variety, 100 lbs. **KE 3-4822**

WELL kept carpets show the results of regular Blue Luster spot cleaning, 100 lbs. **KE 3-4822**

POOL table, full size, 100 lbs. **KE 3-4822**

BASEMENT SALE, Sat. 10 a.m. to 4 p.m. **KE 3-4822**

FIREPLACE Wood, well used, 100 lbs. **KE 3-4822**

GIANT Garage Sale, Sunday, Oct. 3, 10 a.m. to 4 p.m. **KE 3-4822**

KEIL automatic hay mowing, 100 lbs. **KE 3-4822**

TWO Bass guitar speaker system, excellent sound, 100 lbs. **KE 3-4822**

SCHRAMM 75 CFM Sashless air compressor, 100 lbs. **KE 3-4822**

GARAGE SALE Fri. Sat. Sun. 10 a.m. to 4 p.m. **KE 3-4822**

ELECTRIC stove, 100 lbs. **KE 3-4822**

NEIGHBORHOOD Garage Sale, Sat. Sun. 10 a.m. to 4 p.m. **KE 3-4822**

ELECTRIC stove, refrigerator, 100 lbs. **KE 3-4822**

CRASHMAN tools, new, 100 lbs. **KE 3-4822**

KEEP THE CARPET Cleaning problem, 100 lbs. **KE 3-4822**

HUNDREDS—Furniture, 100 lbs. **KE 3-4822**

WELL kept carpets show the results of regular Blue Luster spot cleaning, 100 lbs. **KE 3-4822**

OFF white French Provincial double bed and dresser, 100 lbs. **KE 3-4822**

ENCLOSURE Britannica, like new, 100 lbs. **KE 3-4822**

DOUGLAS pool, 12x6 ft., complete with winter cover, 100 lbs. **KE 3-4822**

WHITE 6 year crib, complete, good condition, 100 lbs. **KE 3-4822**

6-1 Aquariums

15 GALLON tank, complete, fish and accessories, 100 lbs. **KE 3-4822**

6-2 Household Pets

SIBERIAN Husky pups, 100 lbs. **KE 3-4822**

PRIZE housebroken puppy, 100 lbs. **KE 3-4822**

ST. BERNARD pups, AKC, 100 lbs. **KE 3-4822**

POODLE puppies, AKC, 100 lbs. **KE 3-4822**

TWO FEMALES Chihuahuas, AKC, 100 lbs. **KE 3-4822**

BOXER puppies, 6 weeks old, 100 lbs. **KE 3-4822**

POODLE mini-toy, cream color, AKC, 100 lbs. **KE 3-4822**

TWO POODLES for sale, best offer, 100 lbs. **KE 3-4822**

BALE for sale, 100 lbs. **KE 3-4822**

6-3 Livestock & Poultry

9 PROLETS for sale, 6 weeks, 100 lbs. **KE 3-4822**

7-2 Motorcycles & Scooters

MINIBIKE Sale! I can sell you a 100 cc. 100 lbs. **KE 3-4822**

SUZUKI 1968, 150 cc. Excellent condition, 100 lbs. **KE 3-4822**

1968 HONDA CB 100, 100 lbs. **KE 3-4822**

TRIUMPH Tiger, 1970, 100 lbs. **KE 3-4822**

MINI bike 4 h.p. engine, 100 lbs. **KE 3-4822**

HONDA 200, 1968, Good condition, 100 lbs. **KE 3-4822**

HONDA, 1970, 750 cc. Excellent condition, 100 lbs. **KE 3-4822**

HONDA, 1970, 300 cc. Custom paint, 100 lbs. **KE 3-4822**

1971 HONDA, CL 350, excellent condition, 100 lbs. **KE 3-4822**

BSA CHOPPER, 1964, 250 cc. or best offer, 100 lbs. **KE 3-4822**

RJNDRA 1970, trail 70, Suzuki 1969, trail 60; excellent condition, 100 lbs. **KE 3-4822**

TRIUMPH 1969 Bonneville, 750 cc. Excellent condition, 100 lbs. **KE 3-4822**

HONDA, 1967, Super Hawk 300, new battery, new 100 lbs. **KE 3-4822**

HONDA, 1968, 300, high rise handle bars, shorty pipes, engine rebuilt Summer 1970, 100 lbs. **KE 3-4822**

LIL' Indian, 5000, Jack Shaft with trail gear, like new, 100 lbs. **KE 3-4822**

HARLEY Davidson Sportster, 1968, 100 lbs. **KE 3-4822**

MINI BIKE, 4 h.p., back and front chrome fenders, 100 lbs. **KE 3-4822**

LIL' Indian, 3 1/2 hp, new engine parts, brakes, 100 lbs. **KE 3-4822**

HONDA, 300, 1968, 1967, good condition, must sell, 100 lbs. **KE 3-4822**

HONDA, 1971, Custom seat, 100 lbs. **KE 3-4822**

6-4 Horses & Ponies

MARE, registered Morgan, excellent child's horse, 100 lbs. **KE 3-4822**

MARE, 7 years, gentle, English and Western, also good for dressage, 100 lbs. **KE 3-4822**

BOX STALLS, Horses boarded, 100 lbs. **KE 3-4822**

HORSES boarded, newly built barn and clubhouse, 100 lbs. **KE 3-4822**

MORGAN mare, unregistered, 100 lbs. **KE 3-4822**

GENTLE 2 year old filly, grade quarter, call, 100 lbs. **KE 3-4822**

REGISTERED 2 year old Appaloosa stallion, black with white blanket, 100 lbs. **KE 3-4822**

5 YEAR Old Bay Gelding, good with children and dogs, 100 lbs. **KE 3-4822**

BALE for sale, 100 lbs. **KE 3-4822**

14 FOOT horse trailer for sale, 100 lbs. **KE 3-4822**

1970 WHEEL CAMPER, 8 sleepers, pressure water, furnace, 100 lbs. **KE 3-4822**

3000 LB. TRAILER, 1970, 100 lbs. **KE 3-4822**

WINTERIZE

Monson Trailer Parts

200 S. Main

200 S. Main

200 S. Main

200 S. Main

200 S. Main

200 S. Main

200 S. Main

200 S. Main

200 S. Main

200 S. Main

200 S. Main

200 S. Main

200 S. Main

200 S. Main

200 S. Main

200 S. Main

200 S. Main

200 S. Main

200 S. Main

200 S. Main

7-3 Campers & Trailers

TRADE 1968 1000 tent camper with canopy, 100 lbs. **KE 3-4822**

VIKING 1971 tent camper, sleeps 7, stove, refrigerator, 100 lbs. **KE 3-4822**

DODGE 1968, 1/2 ton camper, sleeps 12, 100 lbs. **KE 3-4822**

14 FT. Fleetwing travel trailer, sleeps 5, 100 lbs. **KE 3-4822**

17 WILDCAT, self-contained, sleeps 6, 100 lbs. **KE 3-4822**

UTILITY trailer, tandem, all steel flat bed, 4 1/2 ft. x 12 ft. 100 lbs. **KE 3-4822**

PONTIAC, 1968, Bonneville, 4 door hardtop, 100 lbs. **KE 3-4822**

14 FOOT horse trailer for sale, 100 lbs. **KE 3-4822**

1970 WHEEL CAMPER, 8 sleepers, pressure water, furnace, 100 lbs. **KE 3-4822**

3000 LB. TRAILER, 1970, 100 lbs. **KE 3-4822**

WINTERIZE

Monson Trailer Parts

200 S. Main

200 S. Main

200 S. Main

200 S. Main

200 S. Main

200 S. Main

200 S. Main

200 S. Main

200 S. Main

200 S. Main

200 S. Main

200 S. Main

200 S. Main

200 S. Main

200 S. Main

200 S. Main

200 S. Main

200 S. Main

200 S. Main

200 S. Main

200 S. Main

200 S. Main

7-4 Autos Wanted

INSTANT CASH!!

For your car. We will pay more for clean cars.

We Buy Corvettes

LaRICHE

Chevrolet

40875 Plymouth Road

453-4600

WE BUY ALL MAKES AND MODELS OF CARS IF YOU DON'T GET OUR BID YOU ARE LOSING MONEY

MARK CHEVROLET

33200 Michigan Ave.

722-9147

The AUTOMART

OBSERVERLAND'S MOST COMPLETE SHOPPING GUIDE FOR
USED CARS • NEW CARS • TRUCKS



7-8 Autos For Sale

BUICK Wildcat, 1969, 4 door, 2600 cc, 4 speed, power steering, radio, air, 100,000 miles. Call after 6 p.m. 475-0200

FORD 1969 LTD, 4 door, 2600 cc, 4 speed, power steering, radio, air, 100,000 miles. Call after 6 p.m. 475-0200

CHEVROLET 1969 Impala, 4 door, 2600 cc, 4 speed, power steering, radio, air, 100,000 miles. Call after 6 p.m. 475-0200

VOLKSWAGEN 1969 Beetle, 4 door, 1600 cc, 4 speed, power steering, radio, air, 100,000 miles. Call after 6 p.m. 475-0200

AUSTIN HEALEY 1968, 2 door, 2000 cc, 4 speed, power steering, radio, air, 100,000 miles. Call after 6 p.m. 475-0200

CHEVROLET 1968 Impala, 4 door, 2600 cc, 4 speed, power steering, radio, air, 100,000 miles. Call after 6 p.m. 475-0200

TORINO 1968 GT, 2 door, 2600 cc, 4 speed, power steering, radio, air, 100,000 miles. Call after 6 p.m. 475-0200

FORD 1968 Galaxie, 4 door, 2600 cc, 4 speed, power steering, radio, air, 100,000 miles. Call after 6 p.m. 475-0200

FORD 1968 Mustang, 2 door, 2600 cc, 4 speed, power steering, radio, air, 100,000 miles. Call after 6 p.m. 475-0200

See CARPENTER ON YOUR NEXT NEW CAR
33640 MICHIGAN AVE
WAYNE
PA 1-6600

OLDSMOBILE 1968 Jet Star, 4 door, 2600 cc, 4 speed, power steering, radio, air, 100,000 miles. Call after 6 p.m. 475-0200

VOLKSWAGEN 1968 Beetle, 4 door, 1600 cc, 4 speed, power steering, radio, air, 100,000 miles. Call after 6 p.m. 475-0200

FORD 1968 Mustang, 2 door, 2600 cc, 4 speed, power steering, radio, air, 100,000 miles. Call after 6 p.m. 475-0200

PAT MILLIKEN FORD

CAMARO 1968, 2 door, 2600 cc, 4 speed, power steering, radio, air, 100,000 miles. Call after 6 p.m. 475-0200

NOVA 1968, 4 door, 2600 cc, 4 speed, power steering, radio, air, 100,000 miles. Call after 6 p.m. 475-0200

EDGEMOND 1968, 4 door, 2600 cc, 4 speed, power steering, radio, air, 100,000 miles. Call after 6 p.m. 475-0200

CHEVROLET 1968 Impala, 4 door, 2600 cc, 4 speed, power steering, radio, air, 100,000 miles. Call after 6 p.m. 475-0200

MUSTANG 1968, 2 door, 2600 cc, 4 speed, power steering, radio, air, 100,000 miles. Call after 6 p.m. 475-0200

TOYOTA 1968, 4 door, 2600 cc, 4 speed, power steering, radio, air, 100,000 miles. Call after 6 p.m. 475-0200

DODGE 1968, 4 door, 2600 cc, 4 speed, power steering, radio, air, 100,000 miles. Call after 6 p.m. 475-0200

SHOPPING? ALWAYS CHECK EMMERT CHEVROLET
40 Years—Best Deals
20000 Grand River
KE 1-2900

DODGE 1968, 4 door, 2600 cc, 4 speed, power steering, radio, air, 100,000 miles. Call after 6 p.m. 475-0200

AMERASADOR 1968, 4 door, 2600 cc, 4 speed, power steering, radio, air, 100,000 miles. Call after 6 p.m. 475-0200

KARMAN GHIA 1968, 2 door, 2600 cc, 4 speed, power steering, radio, air, 100,000 miles. Call after 6 p.m. 475-0200

NOV GT, 1967, 2 door, 2600 cc, 4 speed, power steering, radio, air, 100,000 miles. Call after 6 p.m. 475-0200

GRAND Prix 1970, 2 door, 2600 cc, 4 speed, power steering, radio, air, 100,000 miles. Call after 6 p.m. 475-0200

ONE owner, 1967 Chevrolet, 4 door, 2600 cc, 4 speed, power steering, radio, air, 100,000 miles. Call after 6 p.m. 475-0200

MUSTANG 1967, 2 door, 2600 cc, 4 speed, power steering, radio, air, 100,000 miles. Call after 6 p.m. 475-0200

PAT MILLIKEN FORD

NEW 1971 DODGES
Check Our Prices
Last
TOWN & COUNTRY DODGE
Grand River at Nine Mile
474-6750

MERCURY 1968, 4 door, 2600 cc, 4 speed, power steering, radio, air, 100,000 miles. Call after 6 p.m. 475-0200

T-BIRD 1968, 2 door, 2600 cc, 4 speed, power steering, radio, air, 100,000 miles. Call after 6 p.m. 475-0200

1967 Opel Kadett, 4 door, 2600 cc, 4 speed, power steering, radio, air, 100,000 miles. Call after 6 p.m. 475-0200

CONVERTIBLE 1967, 2 door, 2600 cc, 4 speed, power steering, radio, air, 100,000 miles. Call after 6 p.m. 475-0200

OLDS 1968, 4 door, 2600 cc, 4 speed, power steering, radio, air, 100,000 miles. Call after 6 p.m. 475-0200

1969 PONTIAC Catalina, 4 door, 2600 cc, 4 speed, power steering, radio, air, 100,000 miles. Call after 6 p.m. 475-0200

1969 Buick Wildcat, 4 door, 2600 cc, 4 speed, power steering, radio, air, 100,000 miles. Call after 6 p.m. 475-0200

SELLE BUICK-OPEL
200 Ann Arbor Rd., Plymouth
453-4411

TRUCKS NEW & USED

1971 FORD F-100
6, automatic, radio.

1971 FORD VAN
Econoline 6, automatic

1971 EXPLORER
6-cylinder, standard transmission.

1969 CHEVROLET
1/2-ton pickup, V-8, standard transmission.

"A Branch of Your Total Transportation Center"
LEO CALHOUN
41001 PLYMOUTH RD.
PLYMOUTH 453-1100

7-8 Autos For Sale

THUNDERBOLT 1968, 4 door, 2600 cc, 4 speed, power steering, radio, air, 100,000 miles. Call after 6 p.m. 475-0200

FORD 1968 LTD, 4 door, 2600 cc, 4 speed, power steering, radio, air, 100,000 miles. Call after 6 p.m. 475-0200

CHEVROLET 1968 Impala, 4 door, 2600 cc, 4 speed, power steering, radio, air, 100,000 miles. Call after 6 p.m. 475-0200

VOLKSWAGEN 1968 Beetle, 4 door, 1600 cc, 4 speed, power steering, radio, air, 100,000 miles. Call after 6 p.m. 475-0200

Transportation Cars
25 TO CHOOSE FROM. ANY OLD TRADE DOWN.
FEISTER Auto Sales
37401 Ford Rd. at Newburg
Westland
PA 1-2400

PINTO 1971, 2 door, take over payments of \$88.50 per month. 725-1238

LTD 1968, 4 door, 2600 cc, 4 speed, power steering, radio, air, 100,000 miles. Call after 6 p.m. 475-0200

OLDS 1968, 4 door, 2600 cc, 4 speed, power steering, radio, air, 100,000 miles. Call after 6 p.m. 475-0200

CADILLAC 1968, 4 door, 2600 cc, 4 speed, power steering, radio, air, 100,000 miles. Call after 6 p.m. 475-0200

FORD 1968 Galaxie, 4 door, 2600 cc, 4 speed, power steering, radio, air, 100,000 miles. Call after 6 p.m. 475-0200

FORD 1968 Mustang, 2 door, 2600 cc, 4 speed, power steering, radio, air, 100,000 miles. Call after 6 p.m. 475-0200

PAT MILLIKEN FORD

CAMARO 1968, 2 door, 2600 cc, 4 speed, power steering, radio, air, 100,000 miles. Call after 6 p.m. 475-0200

NOVA 1968, 4 door, 2600 cc, 4 speed, power steering, radio, air, 100,000 miles. Call after 6 p.m. 475-0200

EDGEMOND 1968, 4 door, 2600 cc, 4 speed, power steering, radio, air, 100,000 miles. Call after 6 p.m. 475-0200

CHEVROLET 1968 Impala, 4 door, 2600 cc, 4 speed, power steering, radio, air, 100,000 miles. Call after 6 p.m. 475-0200

MUSTANG 1968, 2 door, 2600 cc, 4 speed, power steering, radio, air, 100,000 miles. Call after 6 p.m. 475-0200

TOYOTA 1968, 4 door, 2600 cc, 4 speed, power steering, radio, air, 100,000 miles. Call after 6 p.m. 475-0200

DODGE 1968, 4 door, 2600 cc, 4 speed, power steering, radio, air, 100,000 miles. Call after 6 p.m. 475-0200

AMERASADOR 1968, 4 door, 2600 cc, 4 speed, power steering, radio, air, 100,000 miles. Call after 6 p.m. 475-0200

KARMAN GHIA 1968, 2 door, 2600 cc, 4 speed, power steering, radio, air, 100,000 miles. Call after 6 p.m. 475-0200

NOV GT, 1967, 2 door, 2600 cc, 4 speed, power steering, radio, air, 100,000 miles. Call after 6 p.m. 475-0200

GRAND Prix 1970, 2 door, 2600 cc, 4 speed, power steering, radio, air, 100,000 miles. Call after 6 p.m. 475-0200

ONE owner, 1967 Chevrolet, 4 door, 2600 cc, 4 speed, power steering, radio, air, 100,000 miles. Call after 6 p.m. 475-0200

MUSTANG 1967, 2 door, 2600 cc, 4 speed, power steering, radio, air, 100,000 miles. Call after 6 p.m. 475-0200

PAT MILLIKEN FORD

NEW 1971 DODGES
Check Our Prices
Last
TOWN & COUNTRY DODGE
Grand River at Nine Mile
474-6750

MERCURY 1968, 4 door, 2600 cc, 4 speed, power steering, radio, air, 100,000 miles. Call after 6 p.m. 475-0200

T-BIRD 1968, 2 door, 2600 cc, 4 speed, power steering, radio, air, 100,000 miles. Call after 6 p.m. 475-0200

1967 Opel Kadett, 4 door, 2600 cc, 4 speed, power steering, radio, air, 100,000 miles. Call after 6 p.m. 475-0200

CONVERTIBLE 1967, 2 door, 2600 cc, 4 speed, power steering, radio, air, 100,000 miles. Call after 6 p.m. 475-0200

OLDS 1968, 4 door, 2600 cc, 4 speed, power steering, radio, air, 100,000 miles. Call after 6 p.m. 475-0200

1969 PONTIAC Catalina, 4 door, 2600 cc, 4 speed, power steering, radio, air, 100,000 miles. Call after 6 p.m. 475-0200

1969 Buick Wildcat, 4 door, 2600 cc, 4 speed, power steering, radio, air, 100,000 miles. Call after 6 p.m. 475-0200

SELLE BUICK-OPEL
200 Ann Arbor Rd., Plymouth
453-4411

TRUCKS NEW & USED

1971 FORD F-100
6, automatic, radio.

1971 FORD VAN
Econoline 6, automatic

1971 EXPLORER
6-cylinder, standard transmission.

1969 CHEVROLET
1/2-ton pickup, V-8, standard transmission.

"A Branch of Your Total Transportation Center"
LEO CALHOUN
41001 PLYMOUTH RD.
PLYMOUTH 453-1100

1971 FORD F-100
6, automatic, radio.

1971 FORD VAN
Econoline 6, automatic

1971 EXPLORER
6-cylinder, standard transmission.

1969 CHEVROLET
1/2-ton pickup, V-8, standard transmission.

"A Branch of Your Total Transportation Center"
LEO CALHOUN
41001 PLYMOUTH RD.
PLYMOUTH 453-1100

7-8 Autos For Sale

DUNE BUGGY — 4 passenger, model A styling, loaded with goodies. First \$2,000. 453-0200

CHALLENGER 1968, 2 door, 2600 cc, 4 speed, power steering, radio, air, 100,000 miles. Call after 6 p.m. 475-0200

PONTIAC 1968, 4 door, 2600 cc, 4 speed, power steering, radio, air, 100,000 miles. Call after 6 p.m. 475-0200

DODGE 1968, 4 door, 2600 cc, 4 speed, power steering, radio, air, 100,000 miles. Call after 6 p.m. 475-0200

OLDS 1968, 4 door, 2600 cc, 4 speed, power steering, radio, air, 100,000 miles. Call after 6 p.m. 475-0200

JEEPS
NEW AND USED
IMMEDIATE DELIVERY
Fiesta American
1205 Ann Arbor Road
Plymouth
453-3600

NOVA 1971 SHARP 3-door Chevy, 4, automatic, radio, heater, whitewalls, Lady car. \$1,795. Tennyson Chevrolet. 453-0200

HAVERICK 1970, \$1,295 or take over payments, privately owned. 725-1238

CHEVROLET 1970, 4-door, Air, radio, etc. Good tires. 2 door, black vinyl top. \$1,495. 453-0200

MUSTANG 1968, No rust. Good tires. Best offer. 527-2279

FORD 1970 Squire 10 passenger wagon, full power, rack, low miles, mint condition. \$2,295. Tennyson Chevrolet. 453-0200

DODGE 1968 2600 2-door sedan, 4 cylinder, automatic. Power steering, radio, heater. Excellent condition. \$995. 453-0200

MERCURY 1968 4-door, 2600 cc, 4 speed, power steering, radio, air, 100,000 miles. Call after 6 p.m. 475-0200

HIGHEST dollar per dollar for clean sharp cars. Bob Ford Ford, 14000 Michigan Ave. LU 3-1172

1970 Pontiac Catalina hardtop, radio and heater, automatic, power steering and brakes, whitewalls. A black beauty! \$2,195.

MULLIGAN
Lincoln-Mercury
KE 2-4004
30000 Grand River
Near Evingreen

CONVAIL 1968, 2 door hardtop, 4 speed, 180 HP turbo diesel, mint offer. 474-5155

DATSON 1968, 1 owner, excellent condition, \$1,995. 453-0200

PLYMOUTH 1968, Fury III, 260, 4 barrel, Hurst 4 speed, very clean. 453-0200

DODGE 1968 Polara, 2 door hardtop, 260 V-8, power steering, rack, whitewalls. 453-0200

PLYMOUTH 1968, Duster, 2600 cc, 4 speed, power steering, radio, air, 100,000 miles. Call after 6 p.m. 475-0200

FORD 1968 Galaxie, 2 door, 2600 cc, 4 speed, power steering, radio, air, 100,000 miles. Call after 6 p.m. 475-0200

FIREBIRD 1968, 260 cc, 4 speed, power steering, radio, air, 100,000 miles. Call after 6 p.m. 475-0200

BECATINE 1968, 260 cc, 4 speed, power steering, radio, air, 100,000 miles. Call after 6 p.m. 475-0200

FORD 1968, station wagon, 10 passenger, Country Sedan, power steering, power brakes, luggage rack. Make offer. 453-0200

RAMBLER 1968, like new condition, Classic wagon, automatic, radio, power steering, 1 owner, 260 cc, 4 speed, 100,000 miles. after 5. 453-0200

CHEVY 1967 IMPALA 3-door hardtop, 4, automatic with radio, heater, and power steering, extra clean for your 2nd car! \$995. Tennyson Chevrolet. 453-0200

MAVERICK 1971 3 months old, 2,500 miles, acoust. group, 260 cc, 4 speed, white, whitewalls, automatic transmission, \$1,995. 453-0200

CAMARO 1968 260 260 4 speed, \$1,995 or best offer. 474-5200

MERCURY 1968, new tires, new exhaust, \$1,295. 453-0200

IMPALA 1967, 4-door hardtop, full power, air, 2600. GA 1-7025

ROSEDALE OLDS
17300 GRAND RIVER
272-6212

DAMERON
Chrysler-Plymouth
476-7900
Grand River at Middlebelt

MAVERICK 1971 FM radio, 200 c.i.d., Carpeting. Automatic. 453-0200

VW 1970, automatic, only 7,000 miles, carries full warranty, white, 4 door, 1600 cc, 4 speed, 100,000 miles. Call after 6 p.m. 475-0200

CADILLAC 1970 4 door sedan, excellent condition, full power, air, 2600 cc, 4 speed, 100,000 miles. Call after 6 p.m. 475-0200

MAVERICK 1970 2 door, fully automatic and very low miles. \$1,795. Warranty. See it at 9000 Telegraph at Chicago or phone 453-0200

PAT MILLIKEN FORD

O'Hara Datsun
IS IN LIVONIA!
34955 PLYMOUTH
425-3311

BMW's
NEW, USED AND DEMOS
1972's
NOW IN STOCK

'70 BMW 2002 Rally Special. Weber carb., mag. wheels. Gray in color. "Nice."

'70 BMW 2002 Sahara. Nice. Low mileage.

'71 BMW 1600. Dark blue. Nice. Low mileage.

'70 BMW 2500 with warranty. Priced right.

'67 BMW 1600. Light green.

'69 Porsche 912, green, 5-speed, AM-FM. Nice.

'68 Porsche 911, 5-speed, desert sand. Nice.

NOW IN FARMINGTON
ERHARD MOTOR SALES
32715 GRAND RIVER
477-6400

1969 PONTIAC Catalina, 4 door, 2600 cc, 4 speed, power steering, radio, air, 100,000 miles. Call after 6 p.m. 475-0200

1969 Buick Wildcat, 4 door, 2600 cc, 4 speed, power steering, radio, air, 100,000 miles. Call after 6 p.m. 475-0200

SELLE BUICK-OPEL
200 Ann Arbor Rd., Plymouth
453-4411

TRUCKS NEW & USED

1971 FORD F-100
6, automatic, radio.

1971 FORD VAN
Econoline 6, automatic

1971 EXPLORER
6-cylinder, standard transmission.

1969 CHEVROLET
1/2-ton pickup, V-8, standard transmission.

"A Branch of Your Total Transportation Center"
LEO CALHOUN
41001 PLYMOUTH RD.
PLYMOUTH 453-1100

1971 FORD F-100
6, automatic, radio.

1971 FORD VAN
Econoline 6, automatic

1971 EXPLORER
6-cylinder, standard transmission.

1969 CHEVROLET
1/2-ton pickup, V-8, standard transmission.

7-8 Autos For Sale

70 NSU's
CHOICE SELECTION! Radio, heater, 4-speed and new tires, get up to 35 miles per gallon in these sharp W. German Compacts. Starting at \$1,395

OVERSEAS MOTORS INC.
SERVICE SALES AND PARTS DEPOT
32400 PLYMOUTH
427-4840

FORD 1968, Falcon, 6 cylinder, 2600 cc, best offer. 427-7067

PONTIAC 1968 GTO, 3-speed and floor shift, radio, heater, whitewalls. Engine just overhauled. Very clean. Tennyson Chevrolet. 453-0200

Le Mans 1967 — Convertible. Power steering, brakes, windows. Stereo, \$995. Call days 453-0200, evenings 725-0451

MUSTANG 1968, convertible, 6 cylinder, 4 speed, nice. \$995. 427-0943

YOU CAN NOT AFFORD TO DODGE CRESTWOOD DODGE LOW PRICES
over 150 BRAND NEW '71 DODGES TO CHOOSE FROM
CRESTWOOD DODGE
32900 FORD RD.
GARDEN CITY
421-5700

MUSTANGS galore, 1968 to 1970. Large selection of hardtop convertibles and 2-2's. All equipped. Bob Ford Ford, 14000 Michigan Ave. LU 3-1172

M.G.B. 1967, Excellent condition, red. Must sell, \$1,295. 453-0470

MERCURY 1968, Montclair, 4 door, air conditioning, rear breeze-way window, power brakes, steering, looks and runs good. \$995. 453-0200

STU EVANS CLOSE-OUT SALE
71 INVENTORY MUST BE CLEARED OUT
ALL MERCURYS
SPECIALLY PRICED!
SAVE TODAY AT
STU EVANS
World's Largest Lincoln-Mercury Dealer
32000 FORD RD. 425-4300
GARDEN CITY

MAVERICK 1971 FM radio, 200 c.i.d., Carpeting. Automatic. 453-0200

VW 1970, automatic, only 7,000 miles, carries full warranty, white, 4 door, 1600 cc, 4 speed, 100,000 miles. Call after 6 p.m. 475-0200

CADILLAC 1970 4 door sedan, excellent condition, full power, air, 2600 cc, 4 speed, 100,000 miles. Call after 6 p.m. 475-0200

MAVERICK 1970 2 door, fully automatic and very low miles. \$1,795. Warranty. See it at 9000 Telegraph at Chicago or phone 453-0200

PAT MILLIKEN FORD

O'Hara Datsun
IS IN LIVONIA!
34955 PLYMOUTH
425-3311

BMW's
NEW, USED AND DEMOS
1972's
NOW IN STOCK

'70 BMW 2002 Rally Special. Weber carb., mag. wheels. Gray in color. "Nice."

'70 BMW 2002 Sahara. Nice. Low mileage.

'71 BMW 1600. Dark blue. Nice. Low mileage.

'70 BMW 2500 with warranty. Priced right.

'67 BMW 1600. Light green.

'69 Porsche 912, green, 5-speed, AM-FM. Nice.

'68 Porsche 911, 5-speed, desert sand. Nice.

NOW IN FARMINGTON
ERHARD MOTOR SALES
32715 GRAND RIVER
477-6400

1969 PONTIAC Catalina, 4 door, 2600 cc, 4 speed, power steering, radio, air, 100,000 miles. Call after 6 p.m. 475-0200

1969 Buick Wildcat, 4 door, 2600 cc, 4 speed, power steering, radio, air, 100,000 miles. Call after 6 p.m. 475-0200

SELLE BUICK-OPEL
200 Ann Arbor Rd., Plymouth
453-4411

TRUCKS NEW & USED

1971 FORD F-100
6, automatic, radio.

1971 FORD VAN
Econoline 6, automatic

1971 EXPLORER
6-cylinder, standard transmission.

1969 CHEVROLET
1/2-ton pickup, V-8, standard transmission.

"A Branch of Your Total Transportation Center"
LEO CALHOUN
41001 PLYMOUTH RD.
PLYMOUTH 453-1100

1971 FORD F-100
6, automatic, radio.

1971 FORD VAN
Econoline 6, automatic

1971 EXPLORER
6-cylinder, standard transmission.

1969 CHEVROLET
1/2-ton pickup, V-8, standard transmission.

7-8 Autos For Sale

70 NSU's
CHOICE SELECTION! Radio, heater, 4-speed and new tires, get up to 35 miles per gallon in these sharp W. German Compacts. Starting at \$1,395

OVERSEAS MOTORS INC.
SERVICE SALES AND PARTS DEPOT
32400 PLYMOUTH
427-4840

FORD 1968, Falcon, 6 cylinder, 2600 cc, best offer. 427-7067

PONTIAC 1968 GTO, 3-speed and floor shift, radio, heater, whitewalls. Engine just overhauled. Very clean. Tennyson Chevrolet. 453-0200

Le Mans 1967 — Convertible. Power steering, brakes, windows. Stereo, \$995. Call days 453-0200, evenings 725-0451

MUSTANG 1968, convertible, 6 cylinder, 4 speed, nice. \$995. 427-0943

YOU CAN NOT AFFORD TO DODGE CRESTWOOD DODGE LOW PRICES
over 150 BRAND NEW '71 DODGES TO CHOOSE FROM
CRESTWOOD DODGE
32900 FORD RD.
GARDEN CITY
421-5700

MUSTANGS galore, 1968 to 1970. Large selection of hardtop convertibles and 2-2's. All equipped. Bob Ford Ford, 14000 Michigan Ave. LU 3-1172

M.G.B. 1967, Excellent condition, red. Must sell, \$1,295. 453-0470

MERCURY 1968, Montclair, 4 door, air conditioning, rear breeze-way window, power brakes, steering, looks and runs good. \$995. 453-0200

STU EVANS CLOSE-OUT SALE
71 INVENTORY MUST BE CLEARED OUT
ALL MERCURYS
SPECIALLY PRICED!
SAVE TODAY AT
STU EVANS
World's Largest Lincoln-Mercury Dealer
32000 FORD RD. 425-4300
GARDEN CITY

MAVERICK 1971

IN THE POCKET

By W.W. EDGAR

The country's largest junior bowling league - the City of Livonia recreation circuit - will be larger than ever this year.

Long recognized as the "daddy" of all recreation leagues it will jump from four to five establishments and boast close to 1,500 bowlers.

The jump has been brought about by the addition of a new establishment - Woodland Lanes - to the roster that always has included Livonia Lanes, Merri-Bowl, Cloverlanes, and Wonderland Lanes.

Inaugurated in 1961 as a means of giving the youngsters in the city something to do during the two most dangerous hours of the day - 3:30 p.m. to 5:30 p.m. - the league has been a success from the start and the model for many other cities across the land.

"We're looking for some big things this year," Bill Zirblis, of the Recreation Department, stated as he announced that registrations will start on Oct. 1 and will be on a first come - first served basis.

"As usual," he said, "the youngsters will bowl in two

divisions during the afternoon of each school day. There'll be the juniors for ages 12 years and under and the Teenage section from 13 years up. As usual they'll bowl two games with rollofs at the close of the season to decide the title and the big banquet.

JIM RUDNICKI is walking around on Cloud Nine these days - and for a good reason. Bowling in the Kelsey - Hayes Mixed League at Westland Bowl where he carries a 166 average, he reached the goal of all bowlers last Sunday night when he posted the season's first 300 game.

He opened with a 139 and then shifted from an "outside" line to the inside and added a 178. Then he moved a bit further inside and registered 12 consecutive strikes while the other members of the league stopped bowling - just to watch him.

For a moment it seemed he was going to be denied when the No. 6 and No. 10 pins stood for a fleeting second on his first ball in the 10 frame. But they fell - and from there on there was no stopping him.

His previous high game was a 267.

TED BAKATSELOS, the burly Greek, is back in stride again. So watch out.

Two weeks ago he won the Michigan Majors Bowling Association championship with an impressive victory over Dan Hulan at Firebird Lanes in Pontiac. To win Ted averaged 216 for the 12 game finals and clinched the crown in the closing game with a 259 to Hulan's 195.

He came right back Friday to pace the Westland Classic with a 714 on games of 234, 294 and 276. Trailing him were Denny Dabols with a 697 that included the Classic's high game thus far - a closing game of 288. Third place for the night went to Tommy Laicane with a 656.

In the Ladies Classic Jane Martin set the pace with games of 267, 165 and 182 for 614. The 267 is the league's high game thus far.

BOB GOIKE and Mike Totsy, two veterans in the All-Star Classic, are going to look at the game from the other side of the counter this year.

They have purchased Bowicraft Lanes on Schoolcraft and will host the famed Stroh team Sunday night in the "Grand Opening."

IT ISN'T OFTEN that you look to mixed leagues for high scoring. But that's where Larry Gorman bowled the season's high for Ob-serverland Sunday.

Stevenson Splits In Soccer

Spectacular work in the goal enabled Livonia Stevenson to beat Birmingham Groves, 2-0, in a North Suburban League soccer game.

It was Stevenson's first victory along with one tie in five games this season. Groves now has lost four and tied one. Tom Reid and Dave Spala scored for the Spartans but the play of Jim Dobie was outstanding.

Stevenson dropped a thriller to Birmingham Seaholm Thursday, 1-0. The Spartans have 43 candidates for the soccer varsity, outranking football by eight.

A freak goal enabled Bloomfield Lahser to turn back Country Day, 2-1. A Country Day player accidentally kicked the ball into his own net.

Matt Schlegel scored the only goal for Country Day when he booted one from in front of the Lahser net with five minutes left to go.

Rice Wins In Golf, X-Country

Brother Rice is enjoying fine fall in golf and cross country as well as football.

The Rice golfers won their fifth straight match without a loss when they downed Orchard Lake St. Mary, 150-201.

In cross country Rice made it two straight by downing Notre Dame, 32-27, despite the fact Notre Dame runners placed first and second.

Groves Wins Golf Match From North

Birmingham Groves' golfers edged North Farmington, 163-167, in a Northwest Suburban League match at the Farmington Country Club.

Bill Wilson, of Groves, and Jim Landsberg, of North Farmington, each shot a 39 to share medalist honors.

Ties Mark

Eric Allen, Michigan State senior tailback, carried the ball 37 times against Illinois to tie the all-time Spartan mark for rushes set by Don Highsmith in 1969.

Lee Schuyler Paced Ladies Classic at Livonia Lanes

LEE SCHUYLER paced the Ladies Classic at Livonia Lanes with a 530-60-590. This was only a single pin above Ellie Wilkins who fired a 508 with a closing game of 187-30-217. Becky Parks won the other game with a 180-30-219.

Teenagers Continue to Go Strong at Merri-Bowl

The teenagers continue to go strong at Merri-Bowl where Jim O'Day showed the way with a 235 in 629. Dave Deina topped the Juniors with a 536 and Mike Moran paced the preps with a 212 in 562.

The Women Took Most of the Honors for the Week at Mayflower Lanes

Dorothy Gworek moved to the top of the scorers with a 247 in 596 in the Wednesday Bowlerettes. Sylvia Sheldon went 73 pins over her average in the Nite Owls with a 558; Dorothy Goryea showed the way to the Plymouth Rocks with 531 and Carol Westcott had a 520 in the Thursday circuit.

For a few moments Steve Lambert was having the thrill of his bowling career at Country Lanes. He piled up nine strikes in a row and had visions of going all the way. Then it happened. The No. 10 pin stood and his thrill was only another broken dream.

BILLY MOORE was the man of the hour at Bel-Aire Lanes this week when he paced the Classic with a resounding 731 on games of 264, 205 and 269. Close behind came Andy De Comelo with 236, 222, 223 - 681. John Wodaraski landed third with a 652.

Among the Early Birds, Marion Mitchell was high with 204 in 587 and Dawn Dix paced the Wednesday circuit with a closing game of 197 for a 548.

In the Thursday Mixed group Mary Lu Keating was high with 219-154-217 - 590, and Greg Hatter paced the men with a 227 in 694.

Turf Tips, Quips

By Doc Minard

The things that happen at a race track during the closing weeks of a meeting that has reached its peak and is slowly grinding to a halt are most amazing.

That's why one had to wonder what a small dissident group from the Michigan Harness Horsemen's Association was thinking of when it threatened to boycott the entry box at Wolverine Raceway unless certain conditions were met.

The timing is horrible and the thinking behind the threatened boycott makes one wonder if the dissenting horsemen are thinking at all.

One doesn't threaten to halt races at a track which is well past its peak ... a high that was reached almost two weeks ago when Albatross was responsible for an all-time record mutual handle of \$924,444.

Since then the handle has dipped considerably and so has the attendance ... a pattern that track executives know will continue for the remainder of the meeting which closes on Oct. 30. The story has been the same in every fall harness racing meeting and there isn't any chance that it will be different this year.

The dissidents, who have been demanding twice as many races for Michigan-owned or bred horses, voted earlier in the week to "close down the box."

Apparently the message didn't reach or wasn't accepted by other members of the MHHA because the box contained enough entries to make up limit fields in seven of the 10 races on Monday's card.

STRANGE enough, of the three events with shorter fields, two are finals of the Michigan colt stakes series. The track is putting up purses of \$10,000 each for the eight stakes which start Monday and continue through Friday.

There's another thing the dissidents haven't learned yet ... bettors have long shown an unwillingness to wager much on the cheap, unreliable pacers and trotters. They want horses they can bank on, ones that perform well at all times.

We have yet to see any single Michigan-owned horse come close to the feats accomplished by Albatross in his lone race at Wolverine.

He drew a crowd of more than 12,000. He personally was responsible for the largest single night handle in Michigan history. He cost the track \$13,500 in a minus pool and brought records for the most wagers on a single race and most over bet on a pacer or trotter in Michigan to show.

Perhaps some of the

dissidents can come up with something comparable to prove there should be more cheap claiming races on programs.

Track management is partially responsible for the protests since they have signed contracts with the MHHA which give it the right to go over stall applications and determine the number of stalls that should go to applicants.

It's high time for the MHHA to take score of its weaknesses and do something to correct them. The biggest weakness is that most Michigan owners won't spend amounts necessary to get top horses. They all have the idea that they can strike it rich by buying a horse for \$500 and having him develop into a \$500,000 winner.

It hasn't happened yet in Michigan and we have been watching standardbreds race in the Detroit area since 1944.

If the dissidents want to boycott the entry box and close down the track, the only ones they'll hurt are themselves. There isn't anywhere they can go until the start of the Windsor and Jackson - at Northville meetings in November and there's some doubt their horses will be acceptable there. It's something to think about.

DICK WILSON, genial vice president and general manager of Wolverine Raceway, has come up with something new in the way of entertainment ... a "Country and Western Night" next Wednesday.


It was Wilson who came up with the idea of a "Good Ol' Times" night that attracted a record 19,150 a year ago and almost 18,000 this year. He inaugurated a "Family Night" this year with free admission for all youngsters under 12 when accompanied by parents ... the thought was to give the family an outing at the track each Friday night and still not interfere with school studies.

He also was the instigator of the "Manhattan Fling" for the feminine winners of contests on each Ladies Night (Tuesdays). This gave the winner a 'plane trip to Manhattan and a weekend there as guests of the track.

Just to make it more attractive, he added an eight-day vacation in Florida with air transportation to the winner of the final contest on the last Ladies night of the meeting.

The "Country and Western night" program will find Detroit area singing stars appearing in a concert in the winner's circle starting at 6:30 p.m.

Children under 12 will be admitted free provided they are accompanied by their parents.



FARMINGTON PLAZA ASSOCIATE STORE



SUNDAY ONLY!

WOLLENSAK PORTABLE AC/DC CASSETTE RECORDER

Complete with all accessories

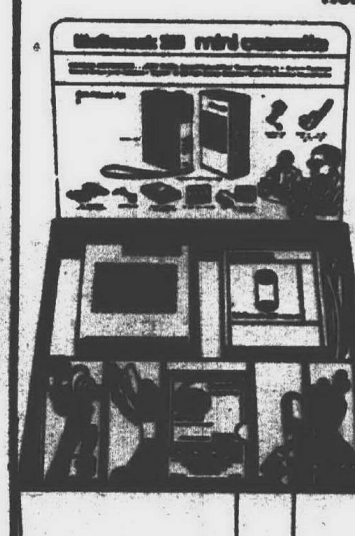


- BATTERIES
- AUDIO CABLE
- EARPHONE
- AC POWER CORD
- TELEPHONE PICK-UP
- REMOTE CONTROL MICROPHONE
- CARRY CASE
- SCOTCH® C-60 HIGH ENERGY TAPE

\$59⁹⁵ Reg. 69.95 SAVE \$10.00

WOLLENSAK MINI CASSETTE

"Record Anywhere... Anytime"



INCLUDES:

- REMOTE MIC
- AC ADAPTER
- DC ADAPTER
- TELEPHONE PICK-UP
- BATTERIES
- CARRY CASE
- EARPHONE
- AUDIO CABLE
- 1 HOUR SCOTCH® HIGH ENERGY TAPE

\$99⁹⁵ REG. 119.95 SAVE \$20.00



MODEL USA-3917
VHF up to 100 miles
UHF up to 60 miles
FM up to 65 miles

\$17⁷⁷
REG. 25.95 SAVE \$8.18



MODEL USA-321
VHF up to 130 miles
UHF up to 75 miles
FM up to 75 miles

\$28⁸⁸
REG. 38.95 SAVE \$10.07



MODEL USA-326
VHF up to 180 miles
UHF up to 100 miles
FM up to 80 miles

\$38⁸⁸
REG. 51.95 SAVE \$13.07



DIVISION OF XANDY CORP.
ASSOCIATE STORE



INTERNATIONAL HARVESTER CO.
31666 8 MILE ROAD
FARMINGTON
476-0960

Available only at
THE FARMINGTON PLAZA STORE
Grand River near Orchard Lake Road
1/4 Mile N. of 8 Mile
Open Mon. - Sat. 10 a.m. to 9 p.m.
Sunday Noon to 5 p.m.
Phone 477-1700